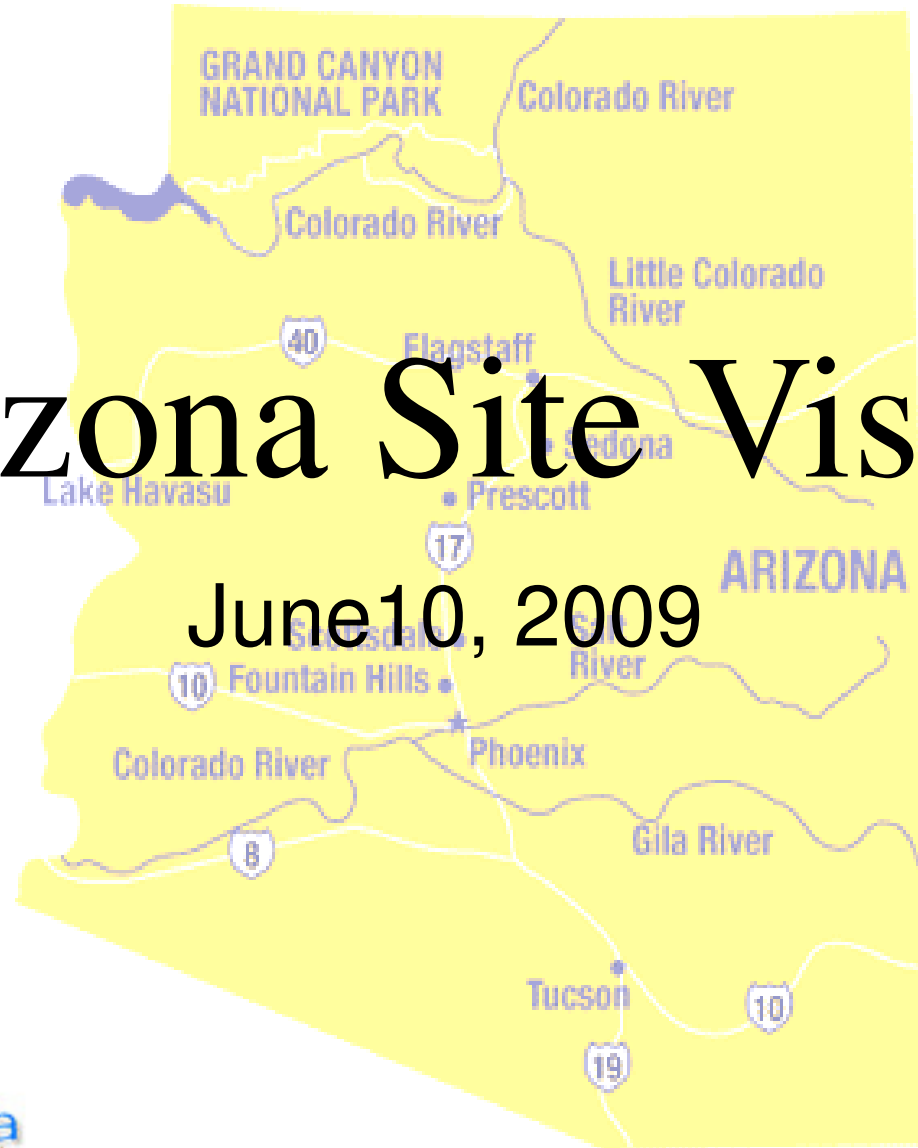


Arizona Site Visit

June 10, 2009



in partnership with

THE SLOAN CENTER ON

aging
& work

AT BOSTON COLLEGE

Project Goals

- Establish an awareness of the significance of an aging public sector workforce
- Assess the readiness of and desire for states to be “employers-of-choice”
- Promote the adoption of workplace flexibility practices, as a business strategy, in the public sector workplace

Project Strategies

- Survey state agencies and provide a benchmarking report to all those completing the survey.
- Conduct a series of web-conferences
- Conduct on-site visits in 10 states
- Develop Tool Kits for participating states
- Provide Issue Briefs and Fact Sheets
- Resurvey to look for any measurable differences

What is an Employer-of-Choice

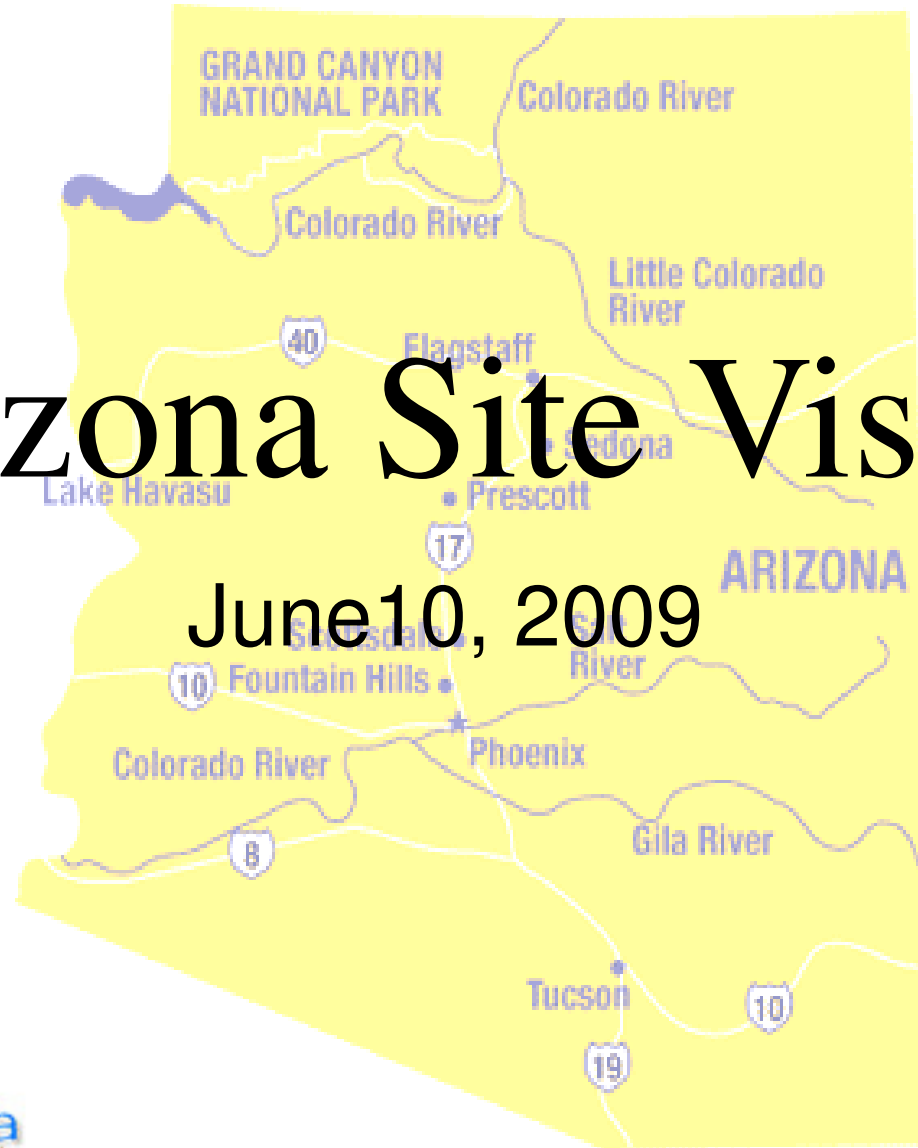
An employer that displays characteristics for recruiting, engaging, and retaining the best available human talent.

Characteristics of an Employer-of- Choice

- Trust
- Teamwork
- Employees First
- Renewal
- Dual Centric employees

Arizona Site Visit

June 10, 2009



in partnership with

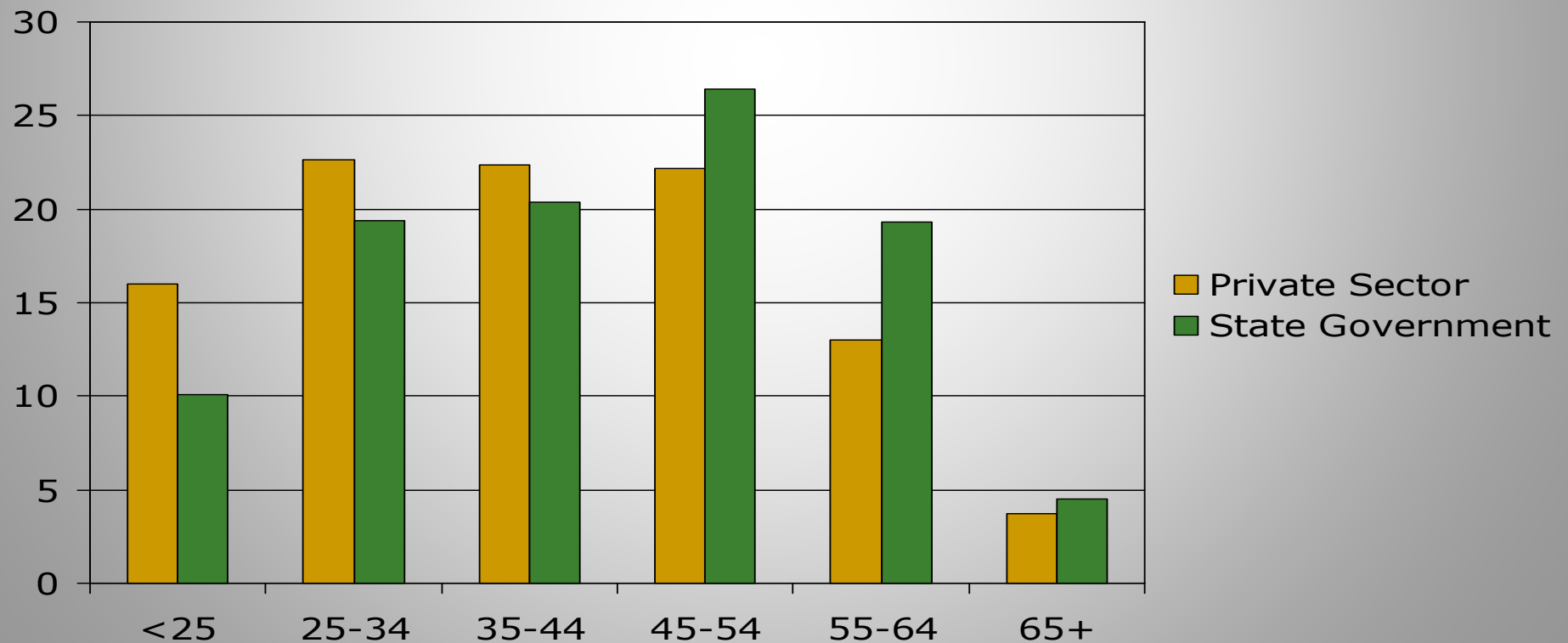
THE SLOAN CENTER ON

aging
& work

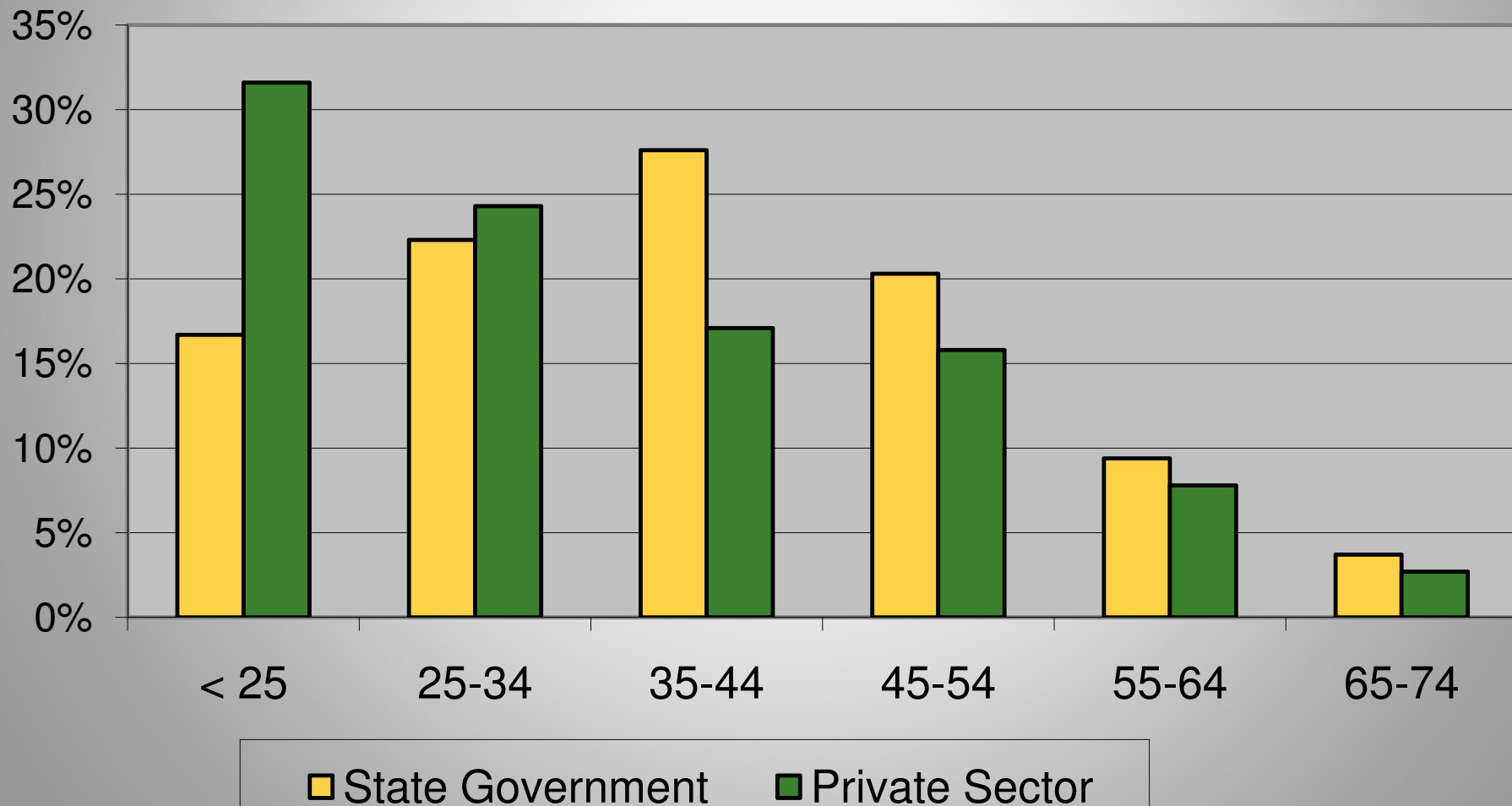
AT BOSTON COLLEGE

Why is aging of the workforce significant to state agencies?

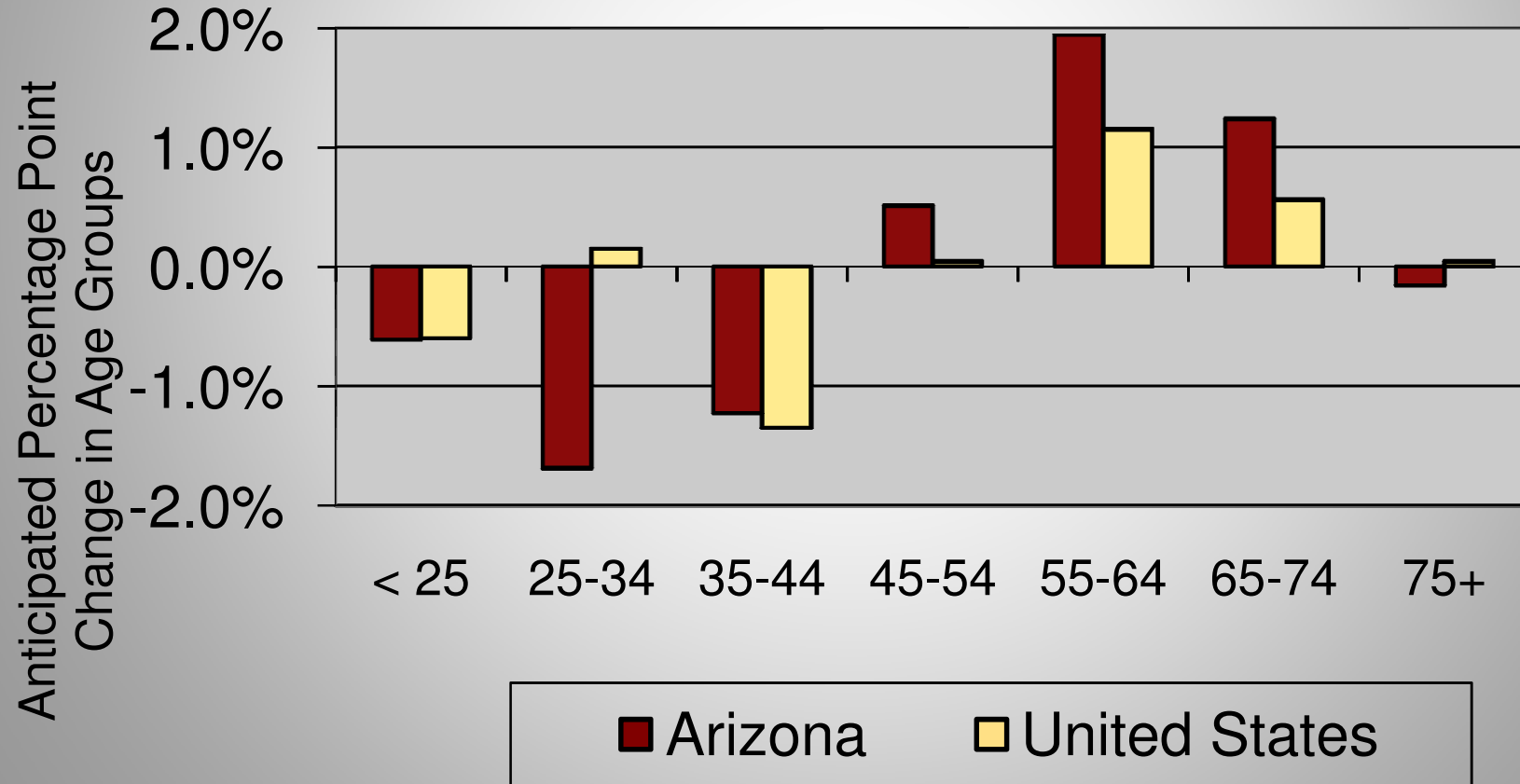
Distribution of the State Government and Private Sector Workforces by Age, 2008



Age of the Workforce in the Arizona Private Sector and State Government

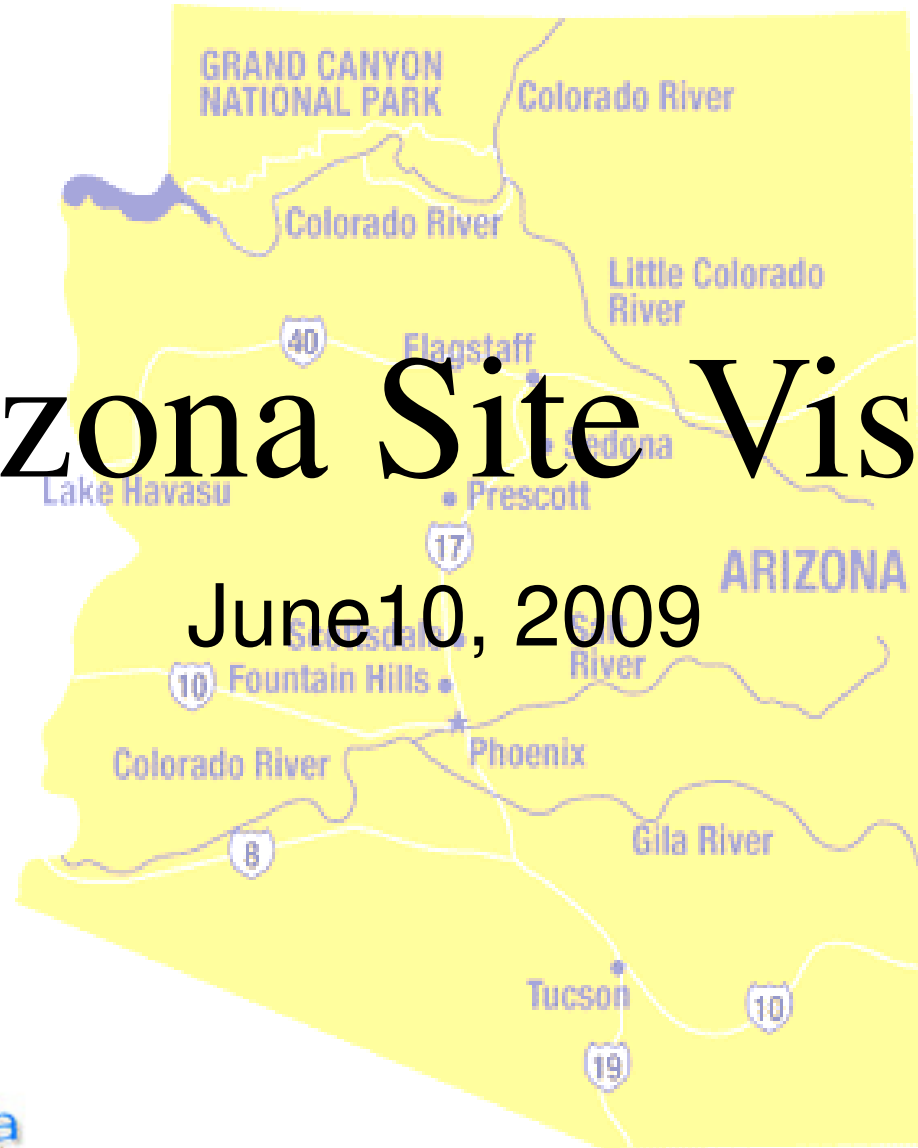


Anticipated Percentage Point Changes in Arizona & the United States, 2006 – 2010



Arizona Site Visit

June 10, 2009



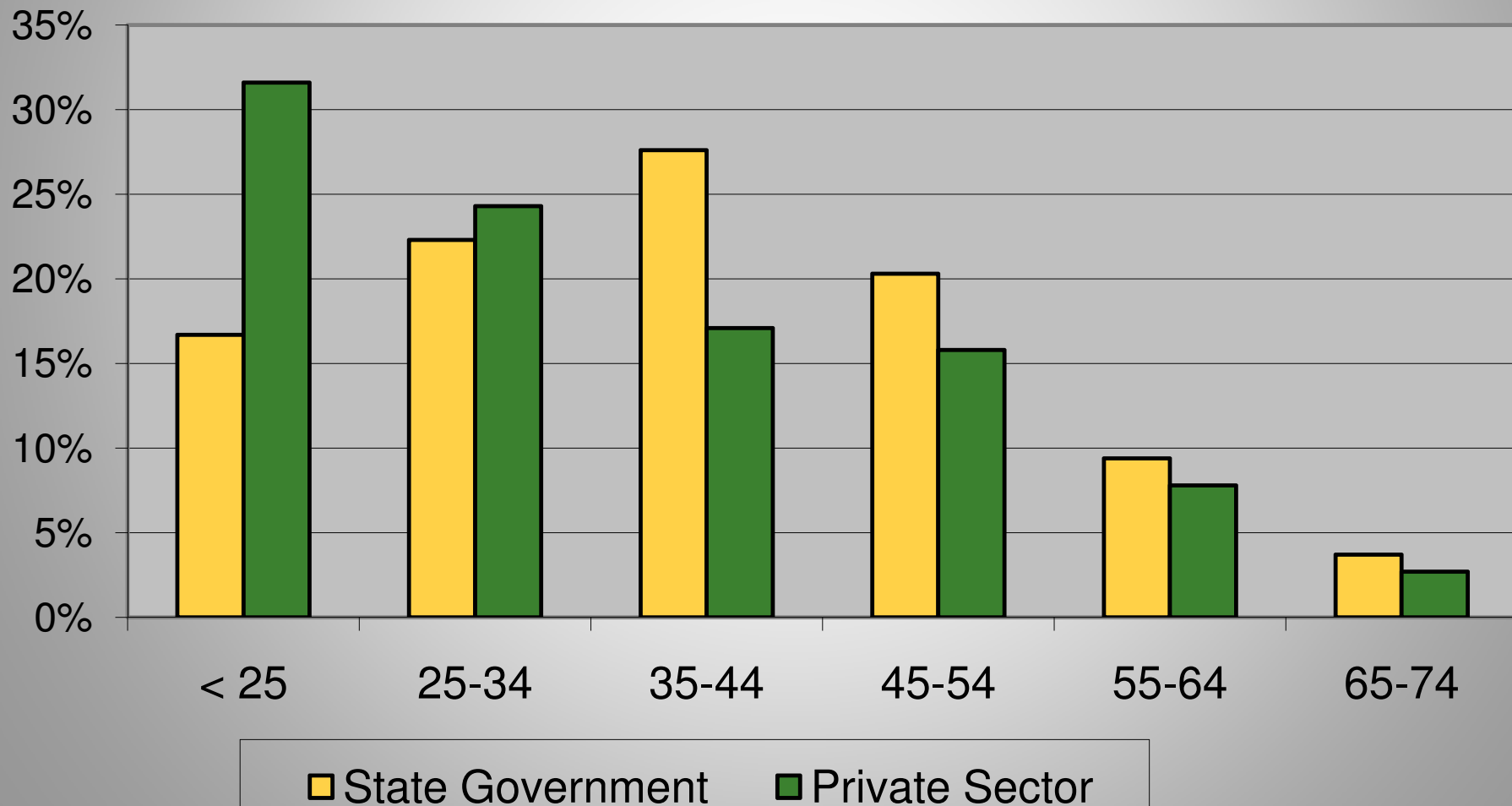
in partnership with

THE SLOAN CENTER ON

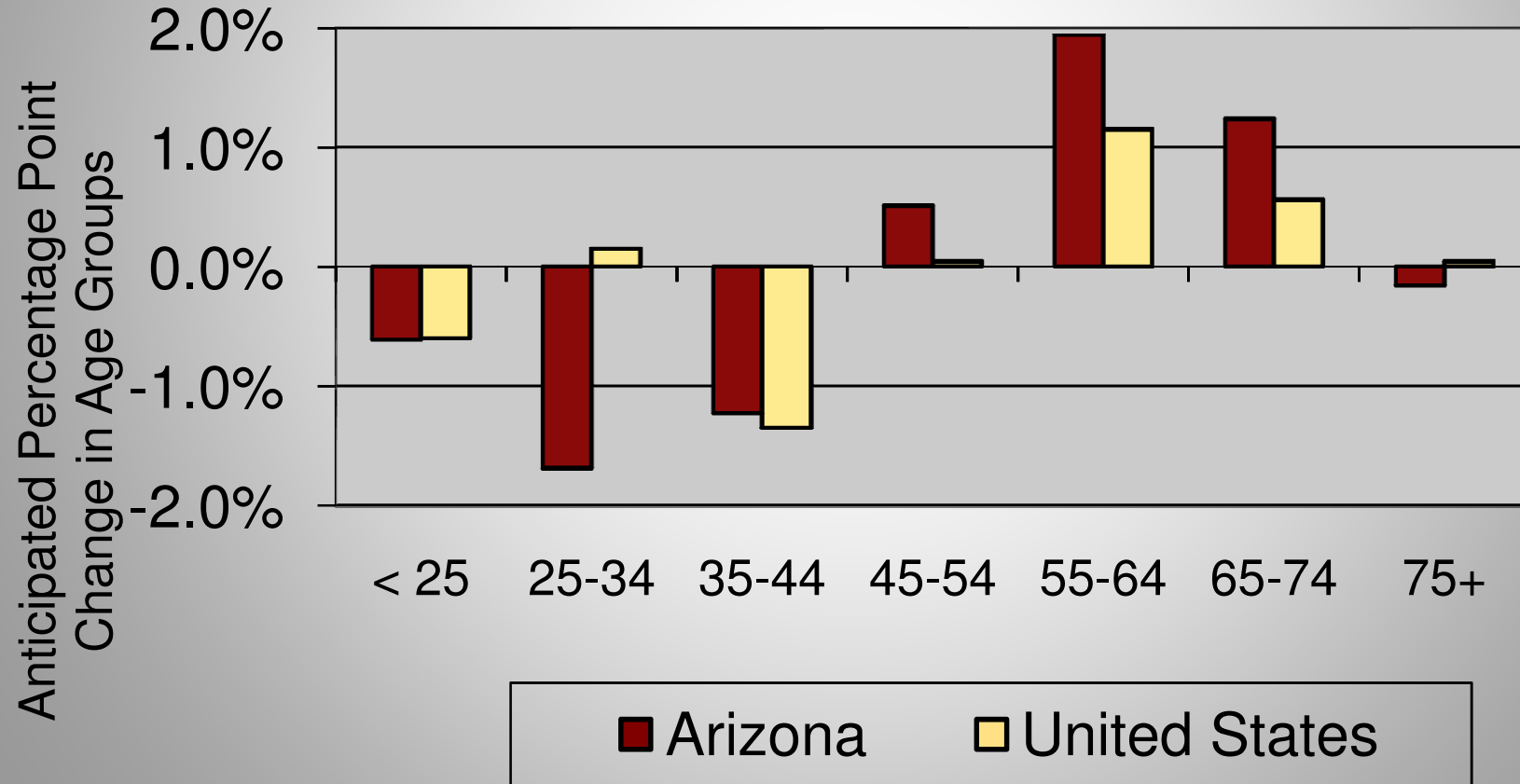
aging
& work

AT BOSTON COLLEGE

Age of the Workforce in the Arizona Private Sector and State Government

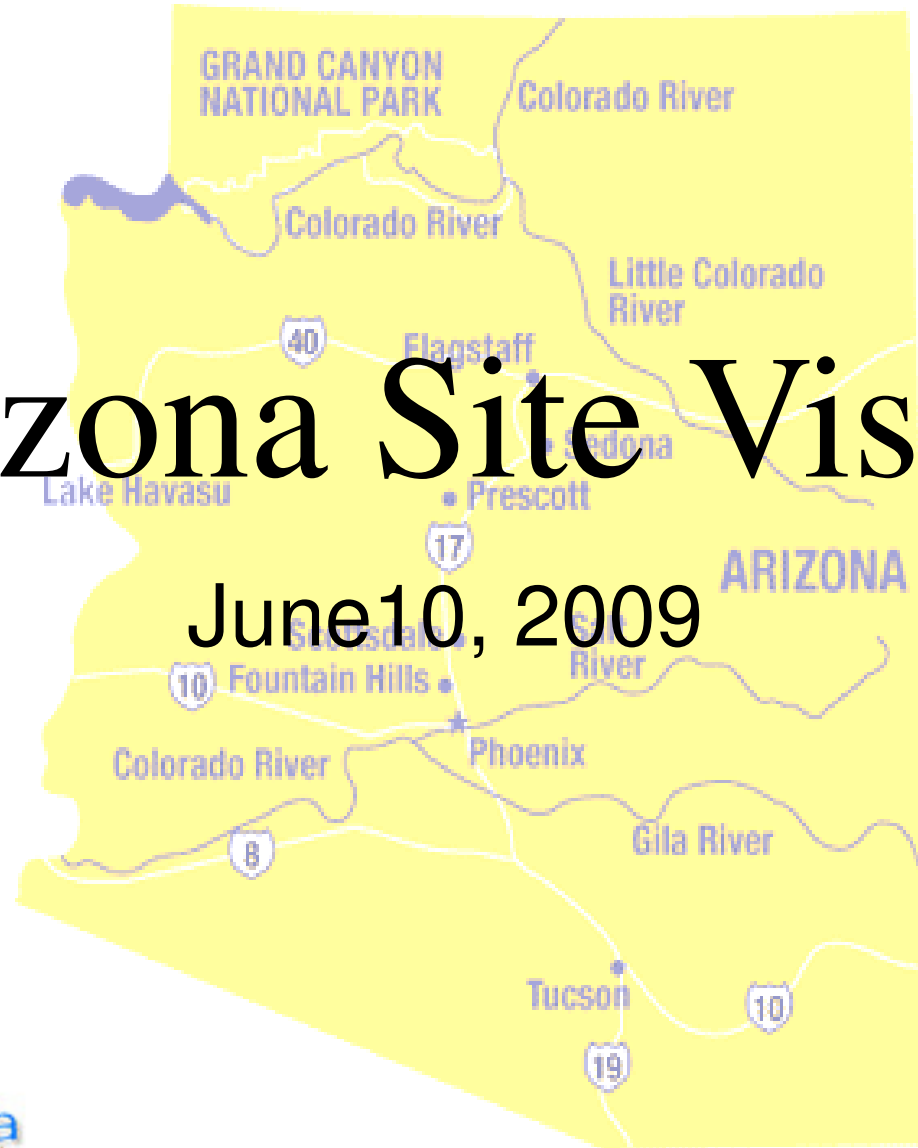


Anticipated Percentage Point Changes in Arizona & the United States, 2006 – 2010



Arizona Site Visit

June 10, 2009



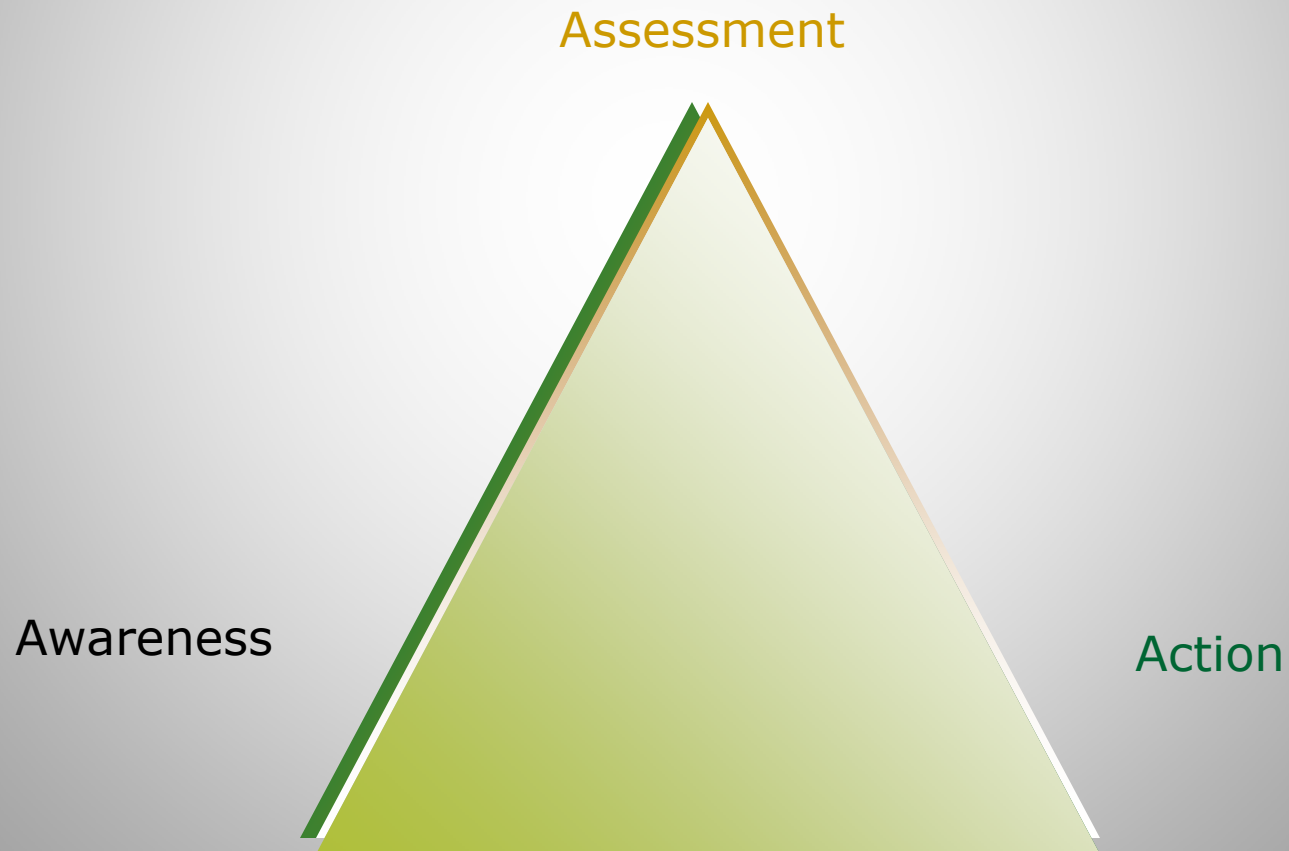
in partnership with

THE SLOAN CENTER ON

aging
& work

AT BOSTON COLLEGE

Awareness to Action A Conceptual Model



Assessment

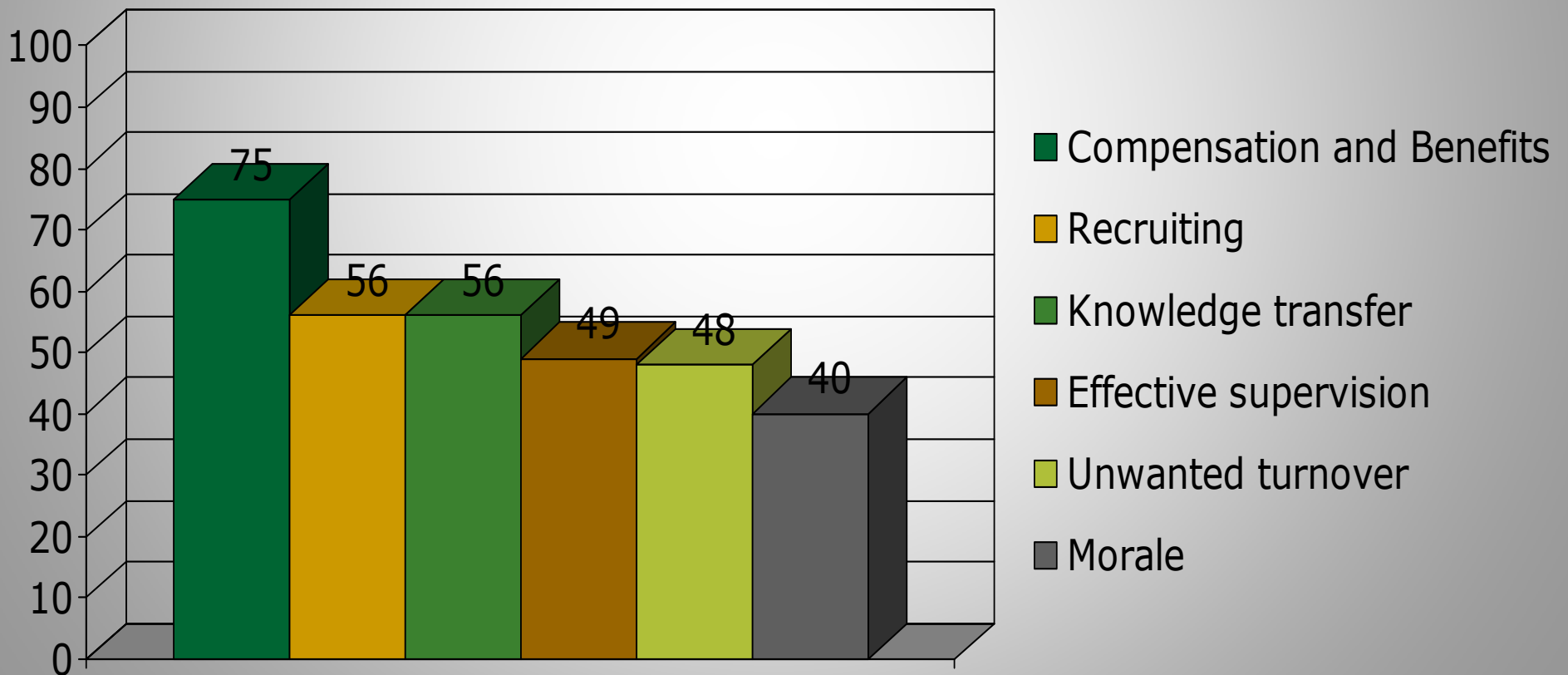


Consider
Analytical

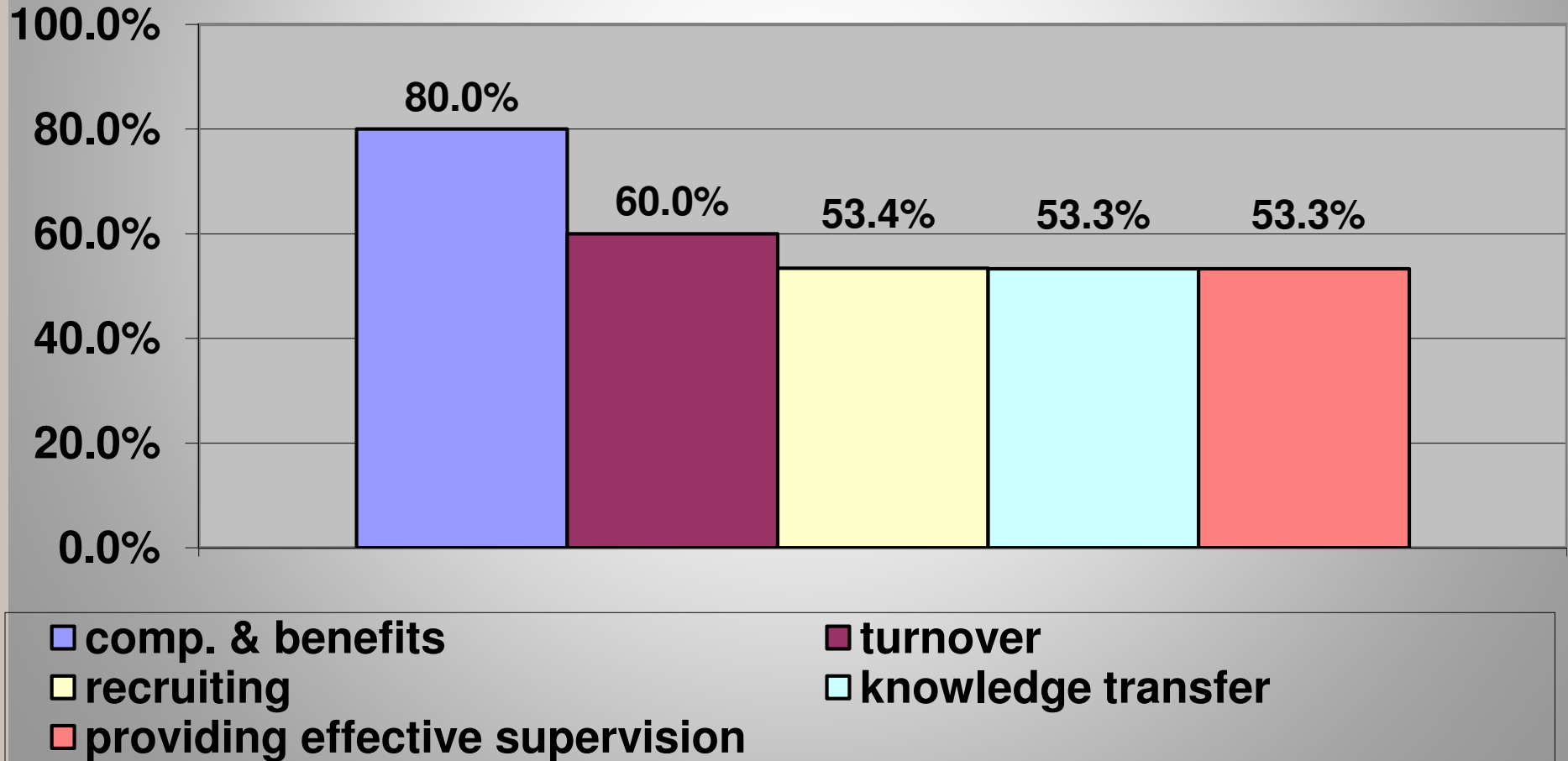
Challenges
Dynamics

Considering HR Challenges

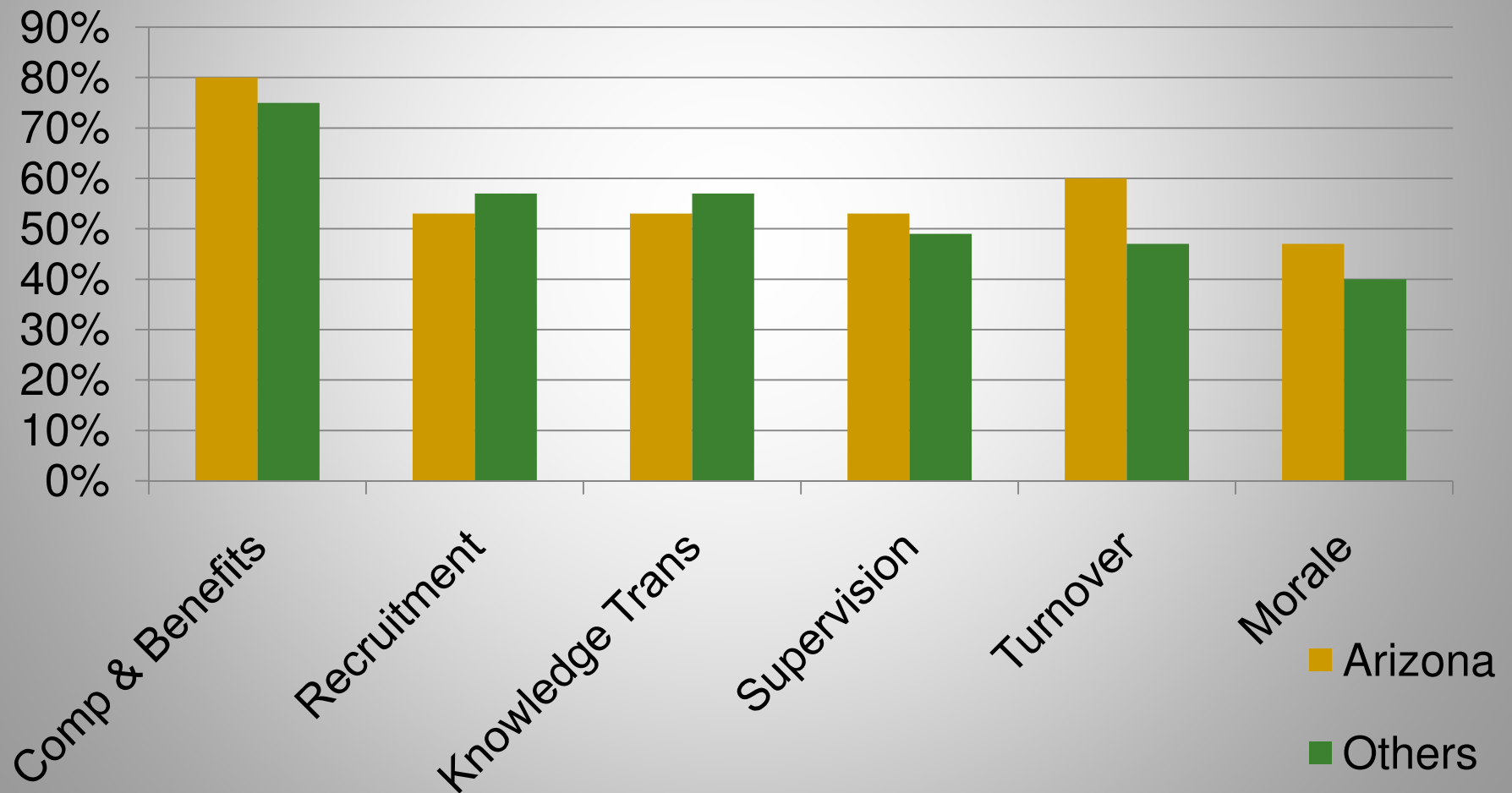
Top HR Challenges Reported by State Agencies, by % of respondents.



Top HR Challenges Experienced by Arizona State Agencies % of respondents

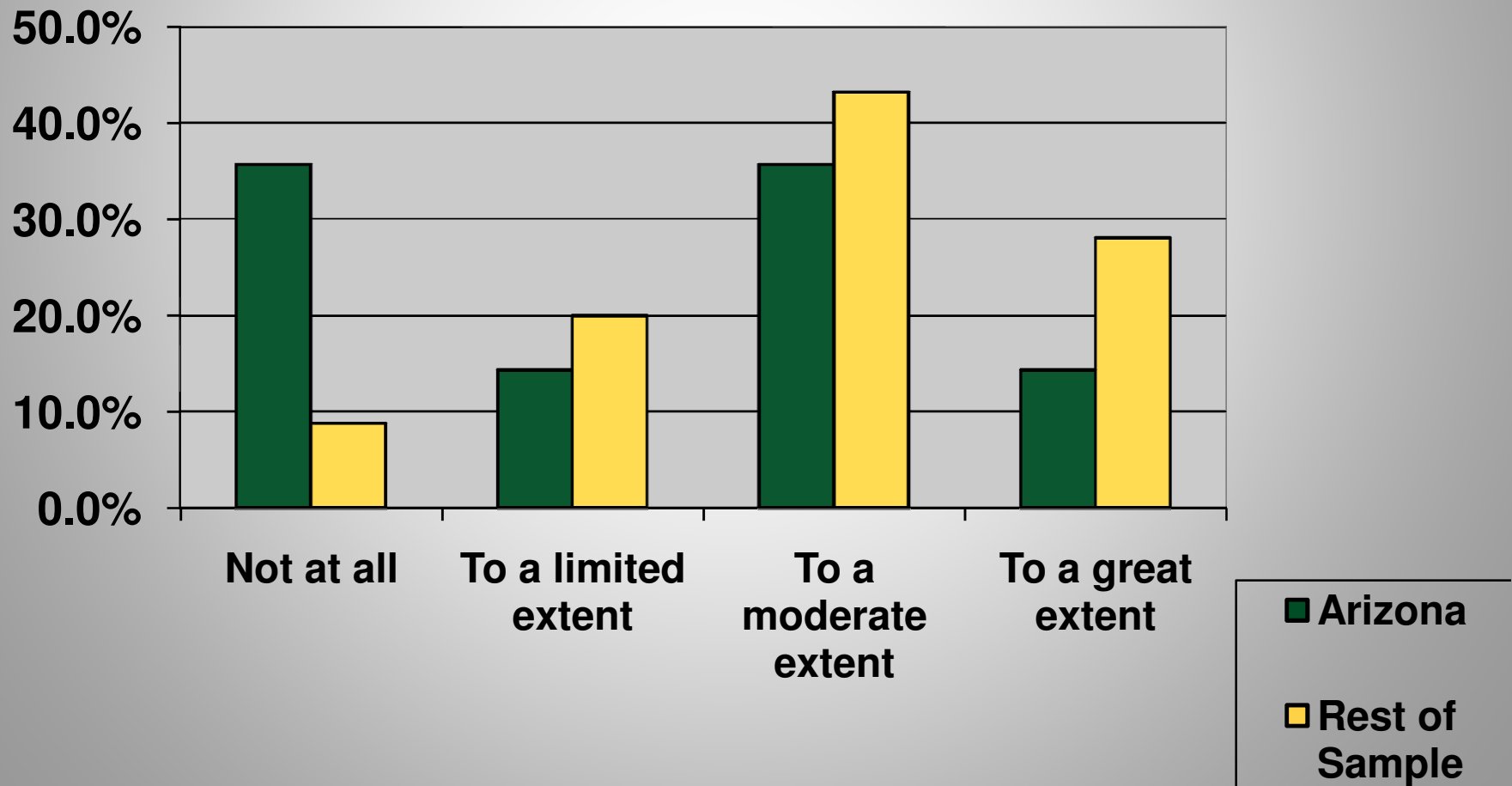


Top HR Challenges Reported by State Agencies and Arizona

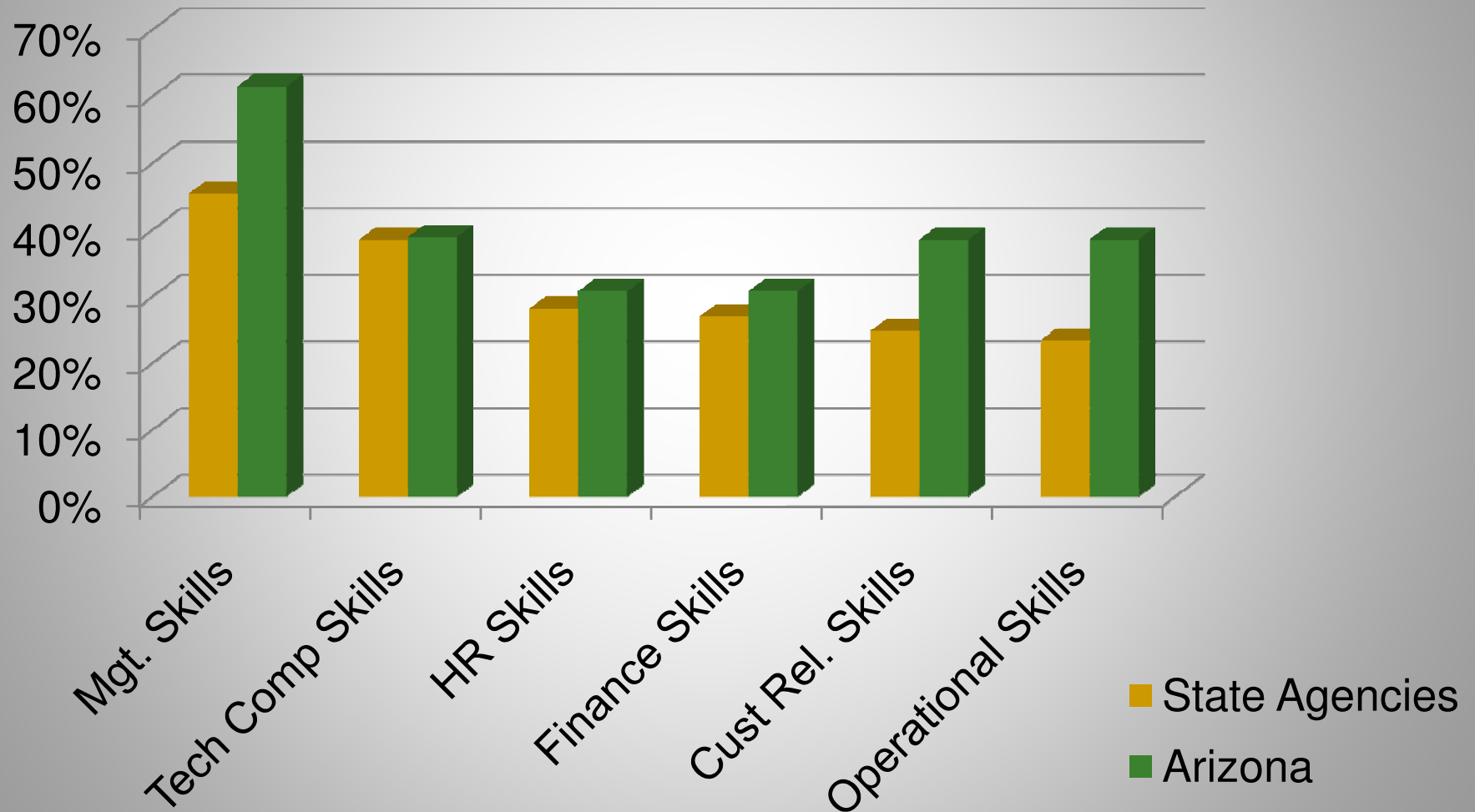


Analyzing Demographics

Percentage of Agencies That Have Analyzed Workforce Demographics

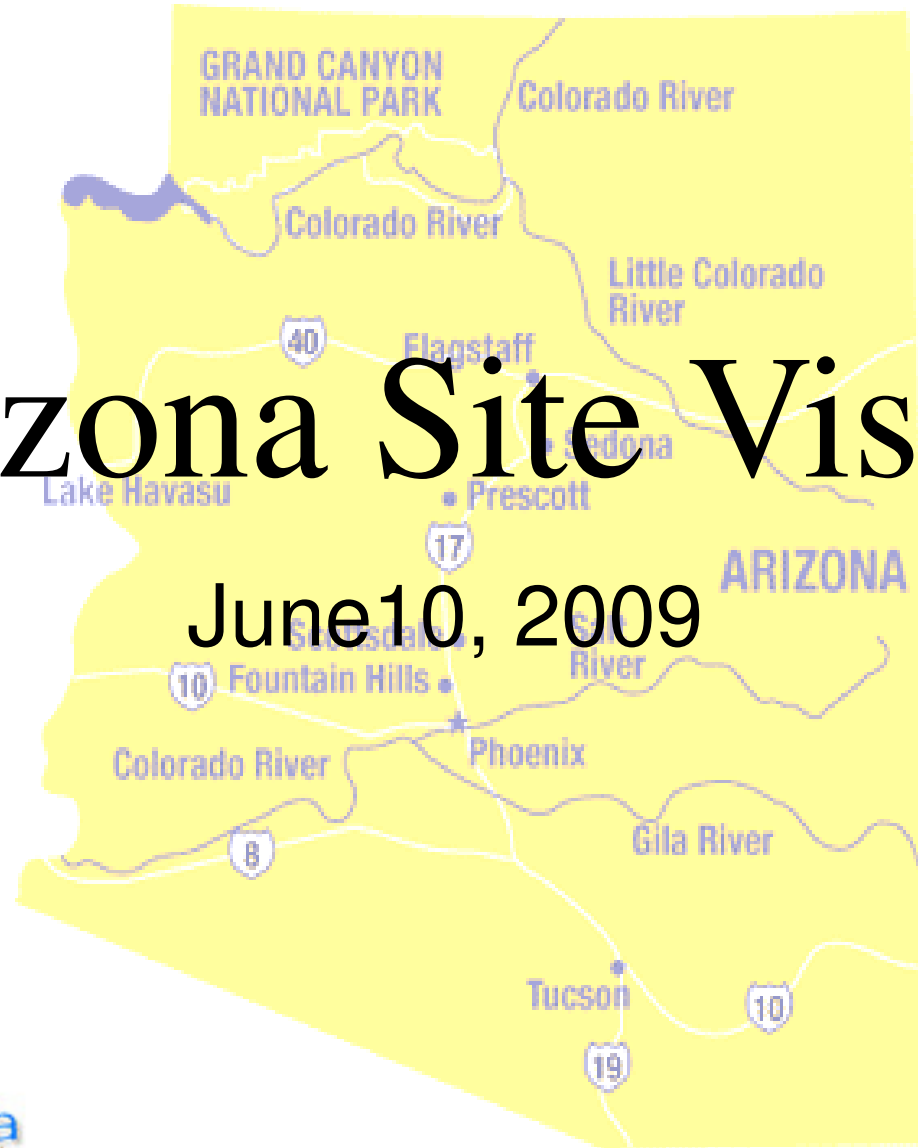


Matching Competency Shortages



Arizona Site Visit

June 10, 2009



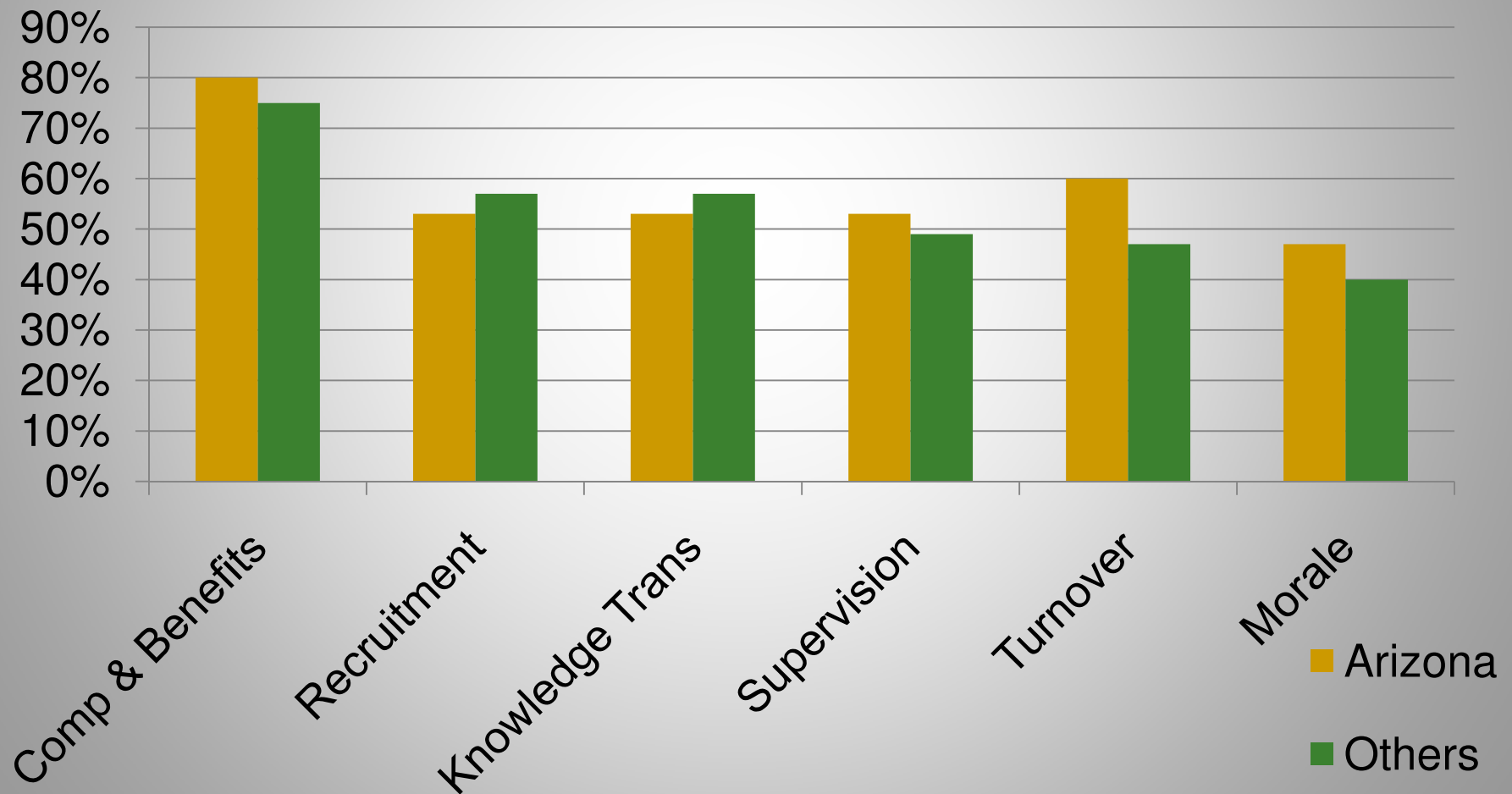
in partnership with

THE SLOAN CENTER ON

aging
& work

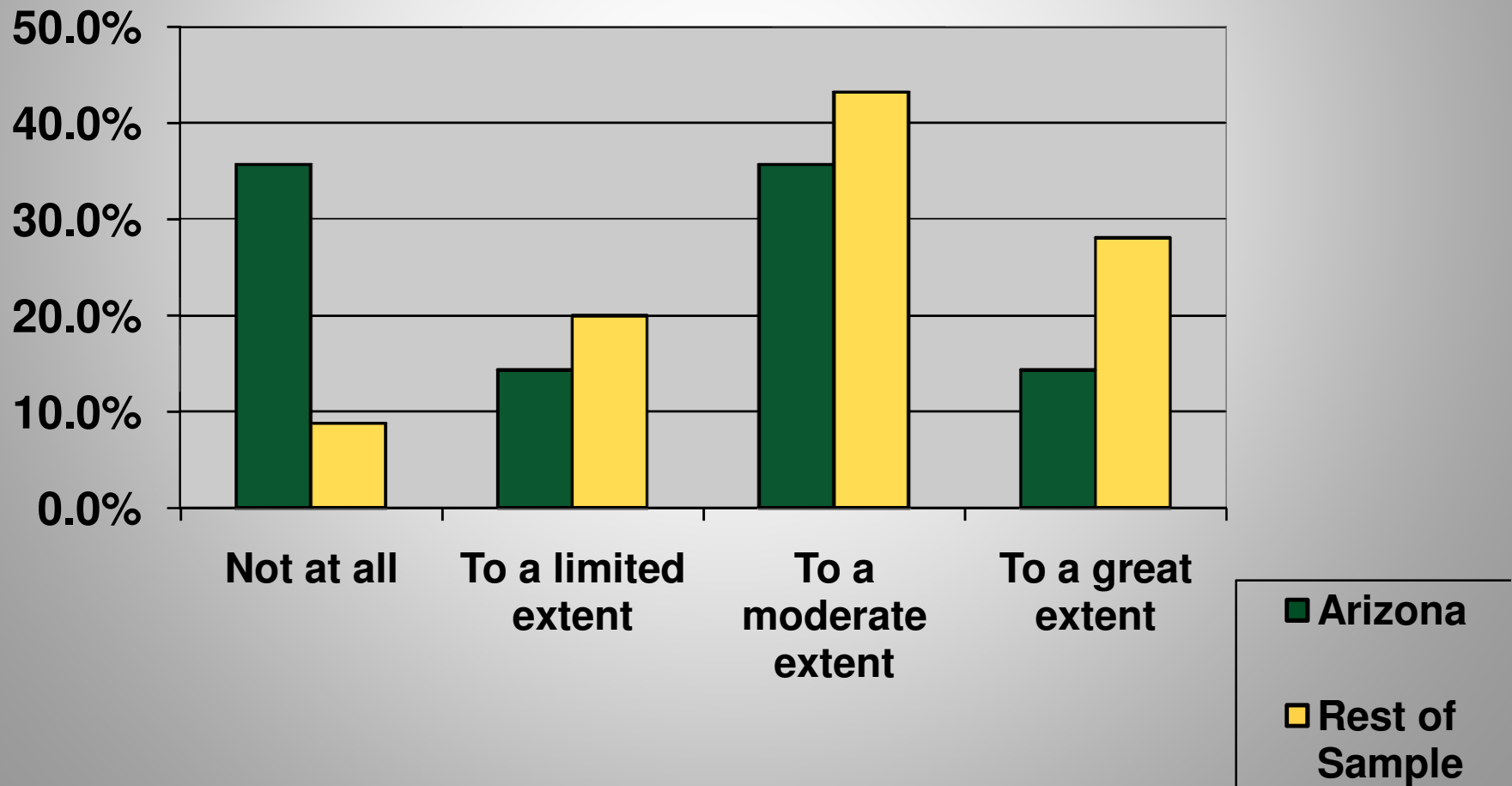
AT BOSTON COLLEGE

Top HR Challenges Reported by State Agencies and Arizona

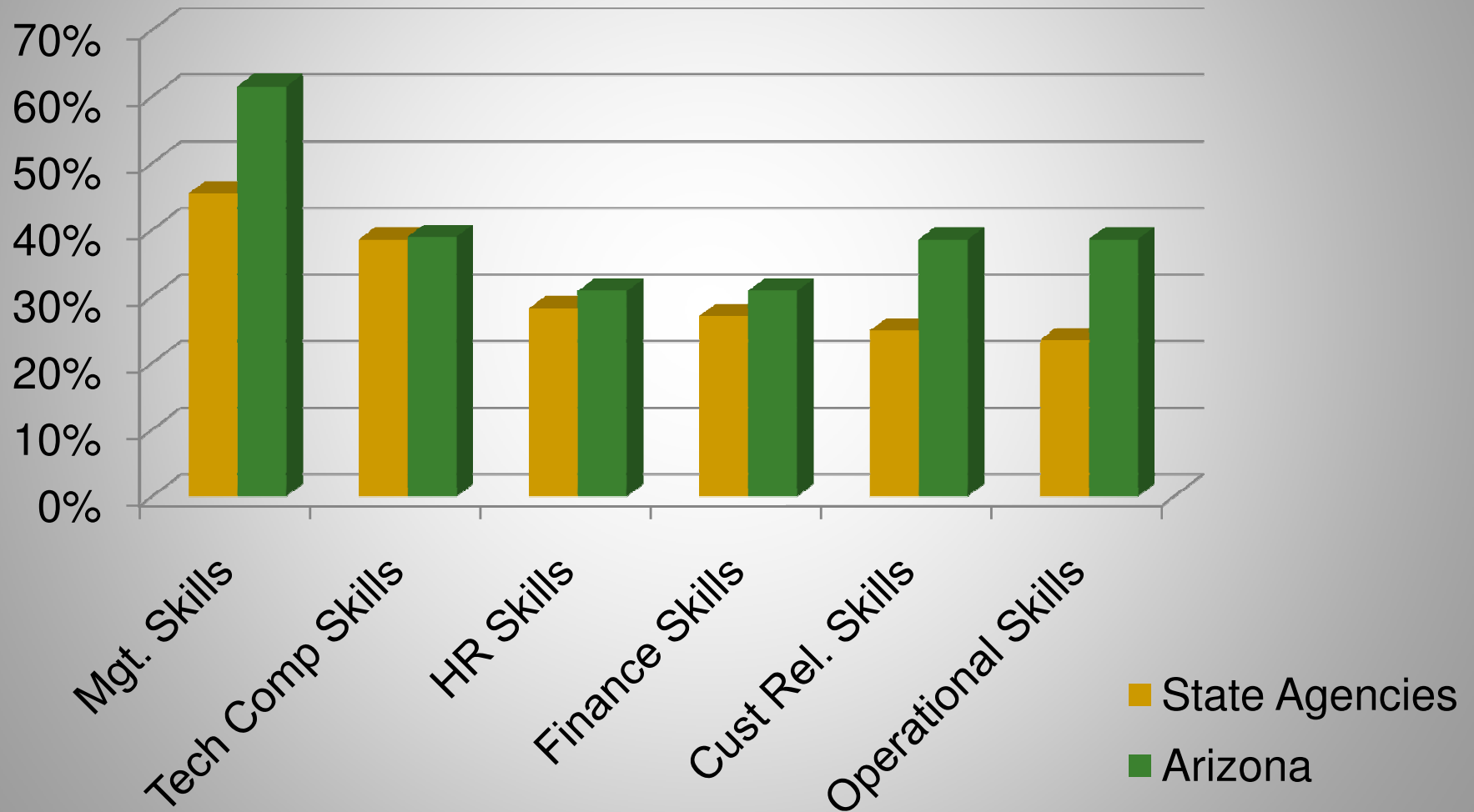


Analyzing Demographics

Percentage of Agencies That Have Analyzed Workforce Demographics

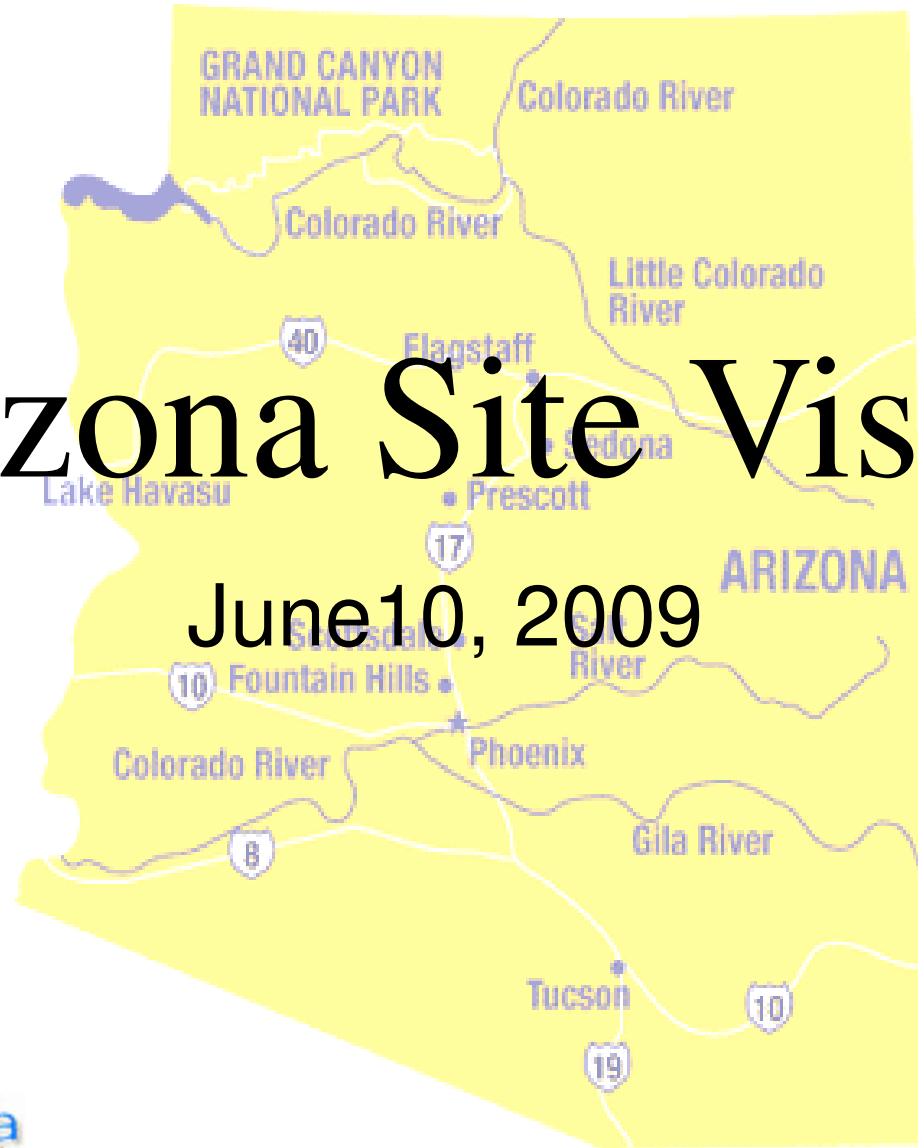


Matching Competency Shortages



Arizona Site Visit

June 10, 2009



in partnership with

THE SLOAN CENTER ON

aging
& work

AT BOSTON COLLEGE

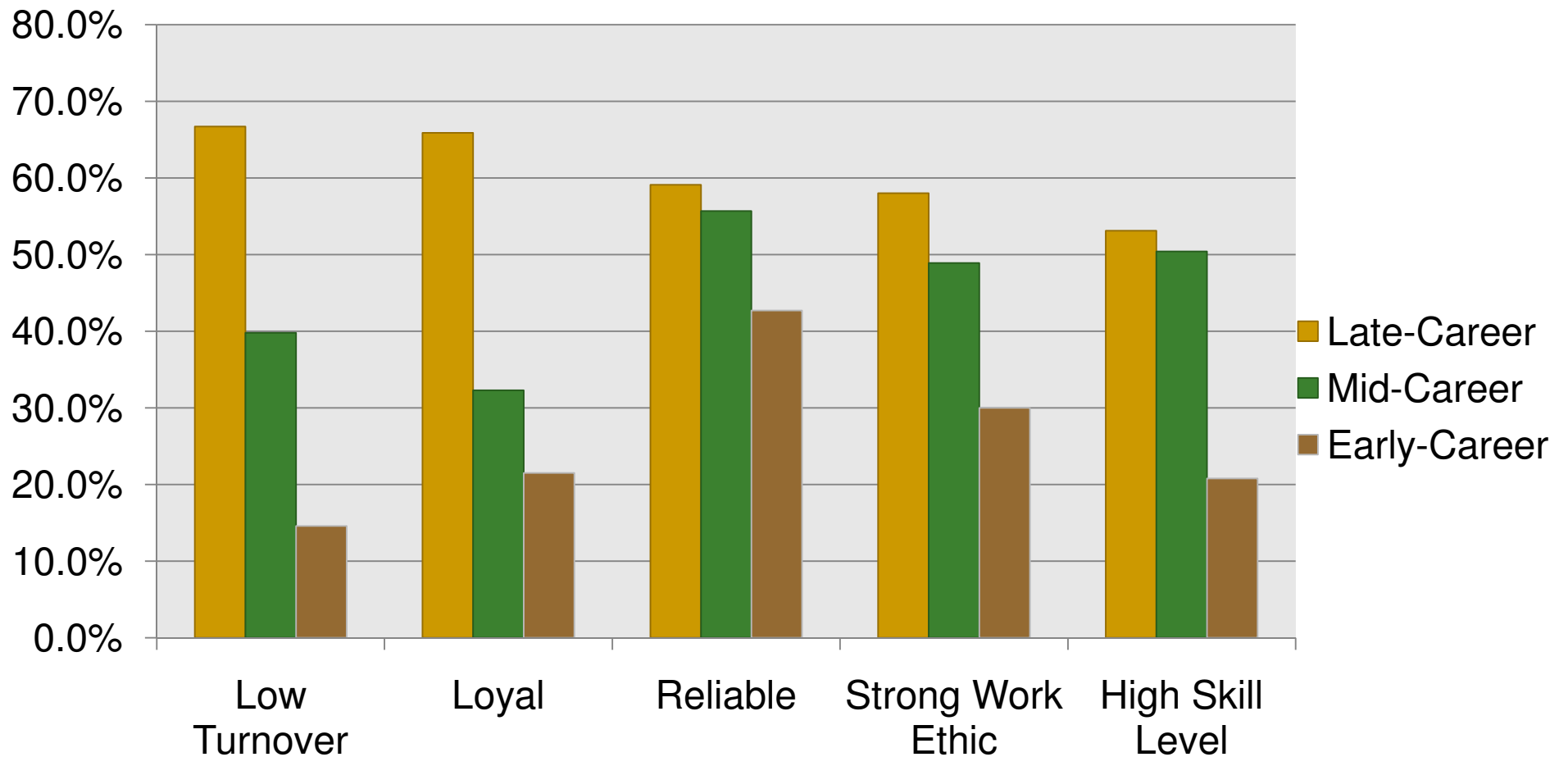
Positive characteristics
Negative characteristics

Awareness

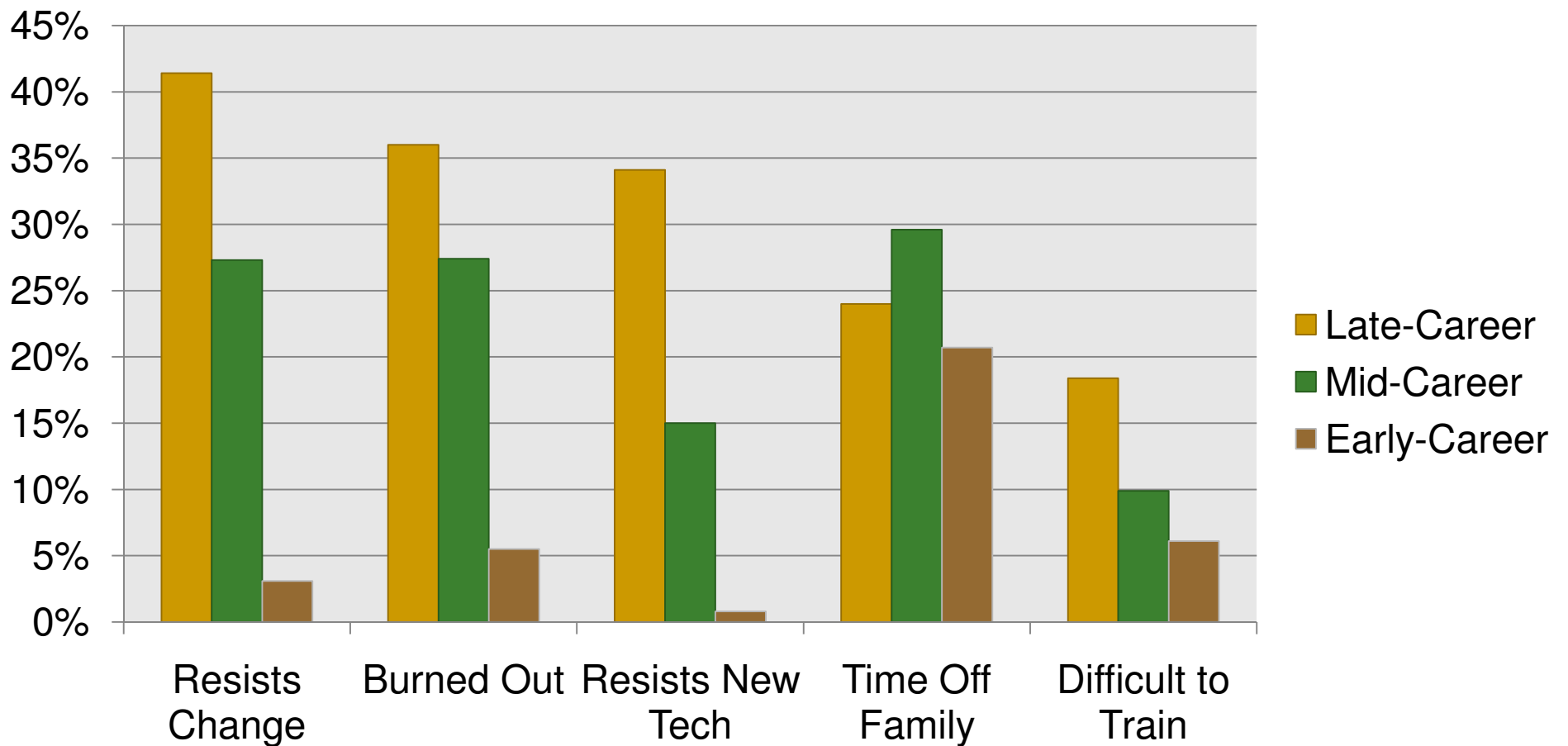


**Positive characteristics
Negative characteristics**

Perceptions of Positive Workforce Characteristics by Career Stages

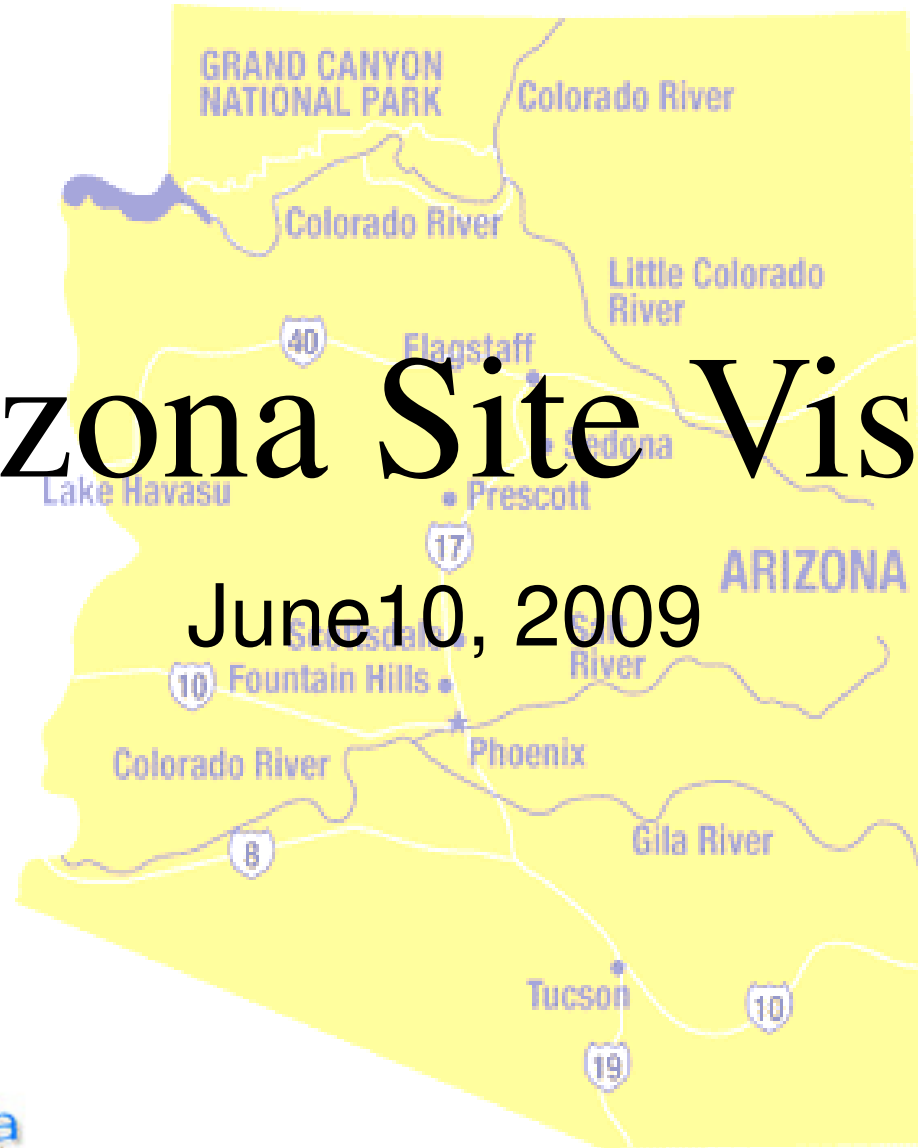


Workforce Characteristics That Might Present Negative Consequences for Agencies



Arizona Site Visit

June 10, 2009



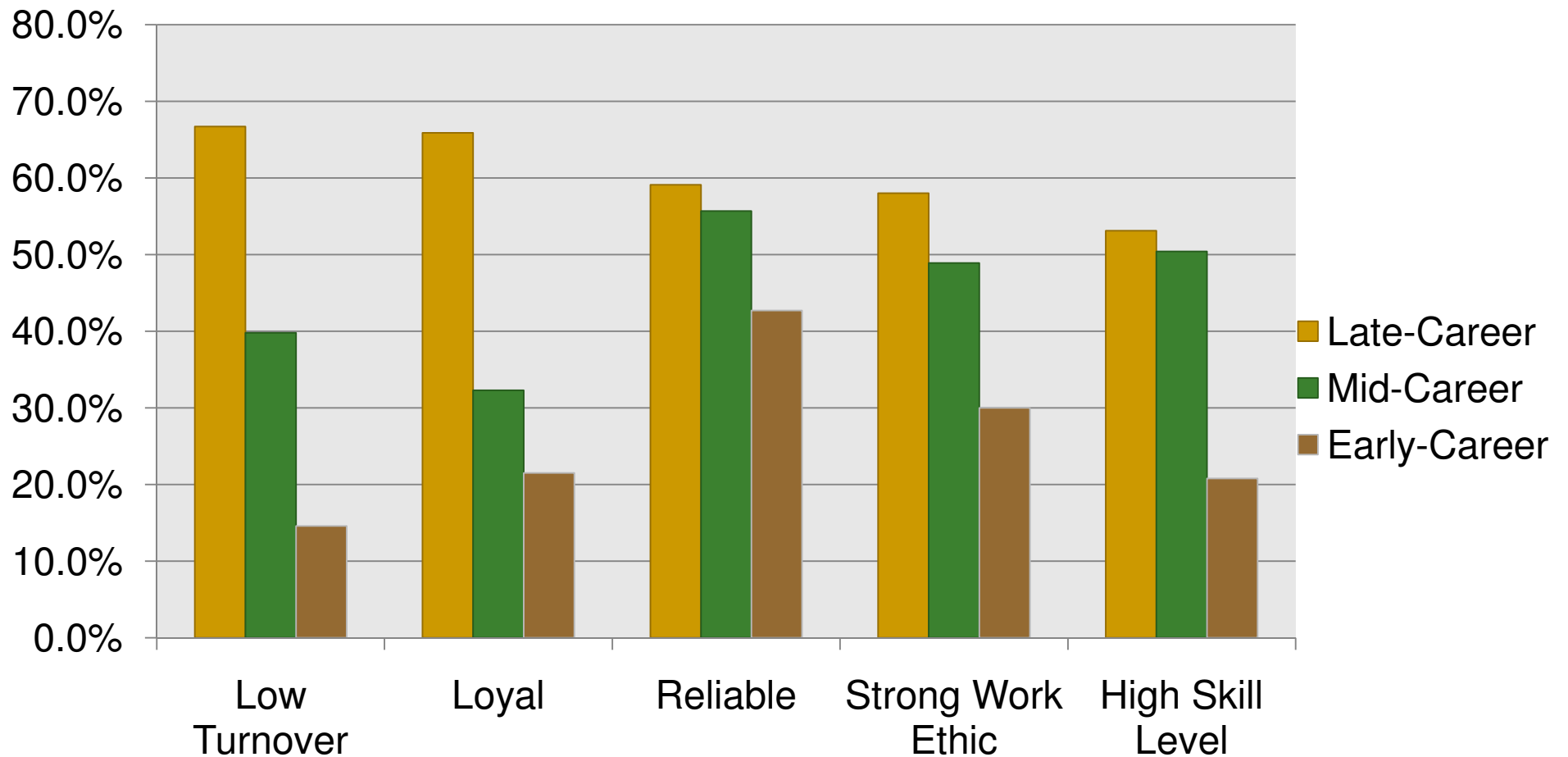
in partnership with

THE SLOAN CENTER ON

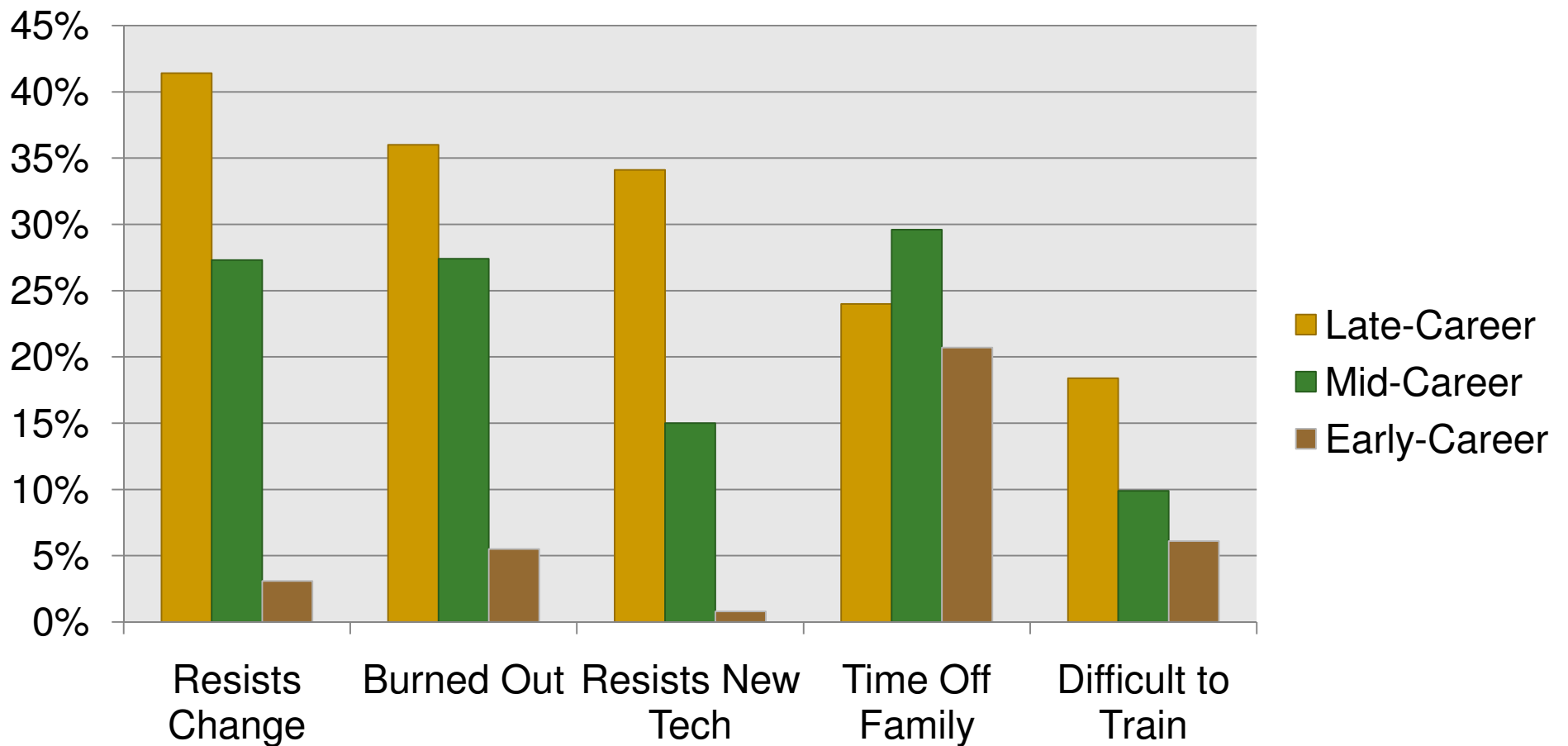
aging
& work

AT BOSTON COLLEGE

Perceptions of Positive Workforce Characteristics by Career Stages

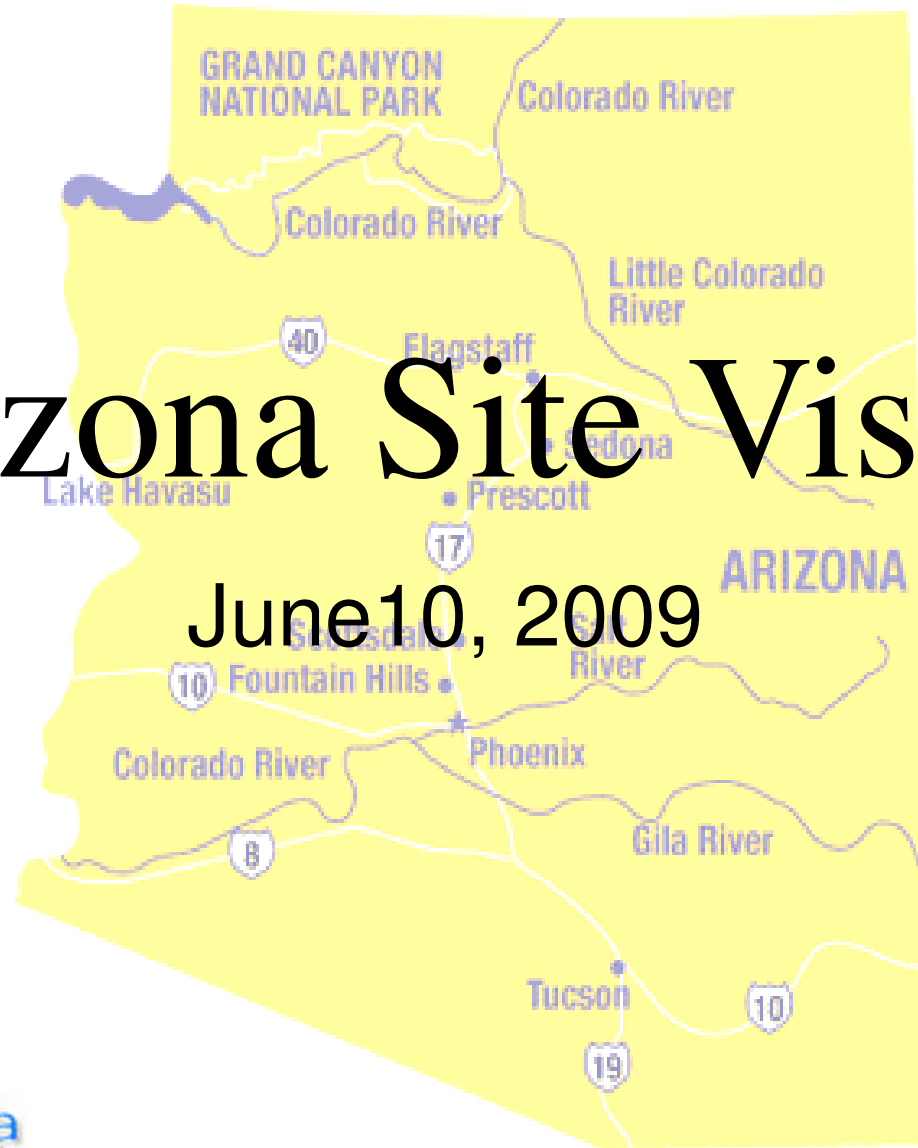


Workforce Characteristics That Might Present Negative Consequences for Agencies



Arizona Site Visit

June 10, 2009



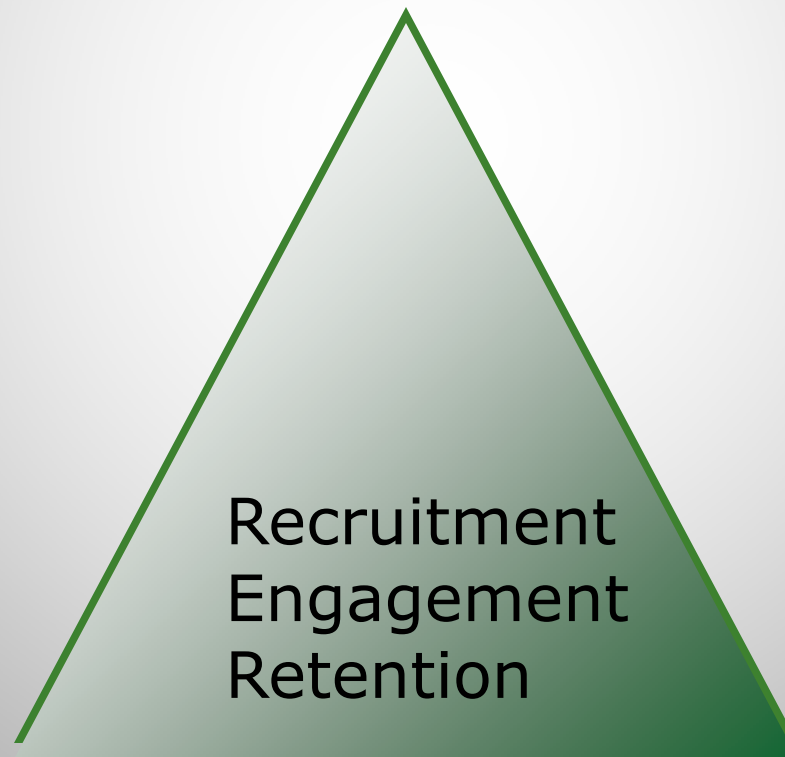
in partnership with

THE SLOAN CENTER ON

aging
& work

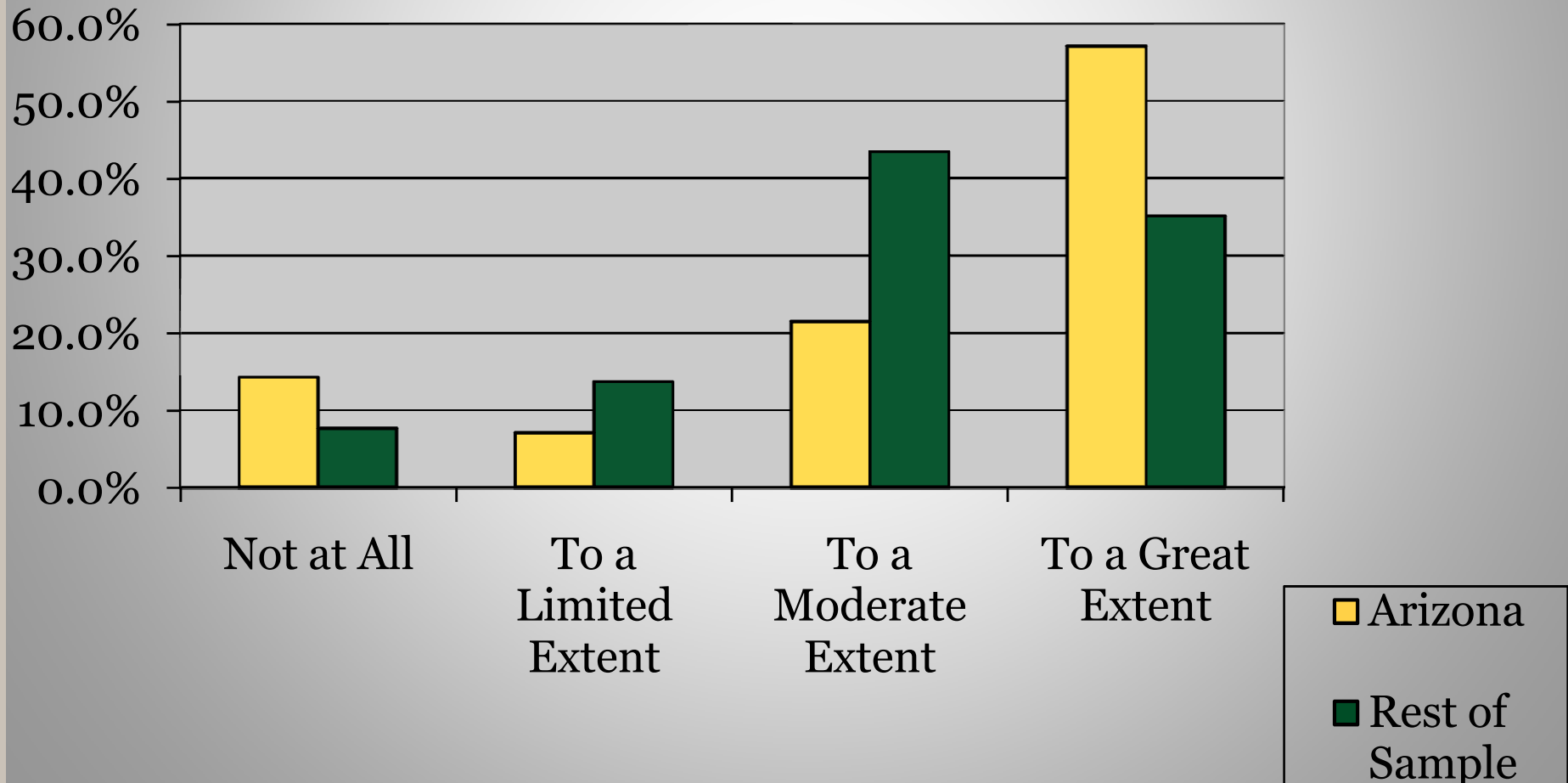
AT BOSTON COLLEGE

Awareness to Action A Conceptual Model

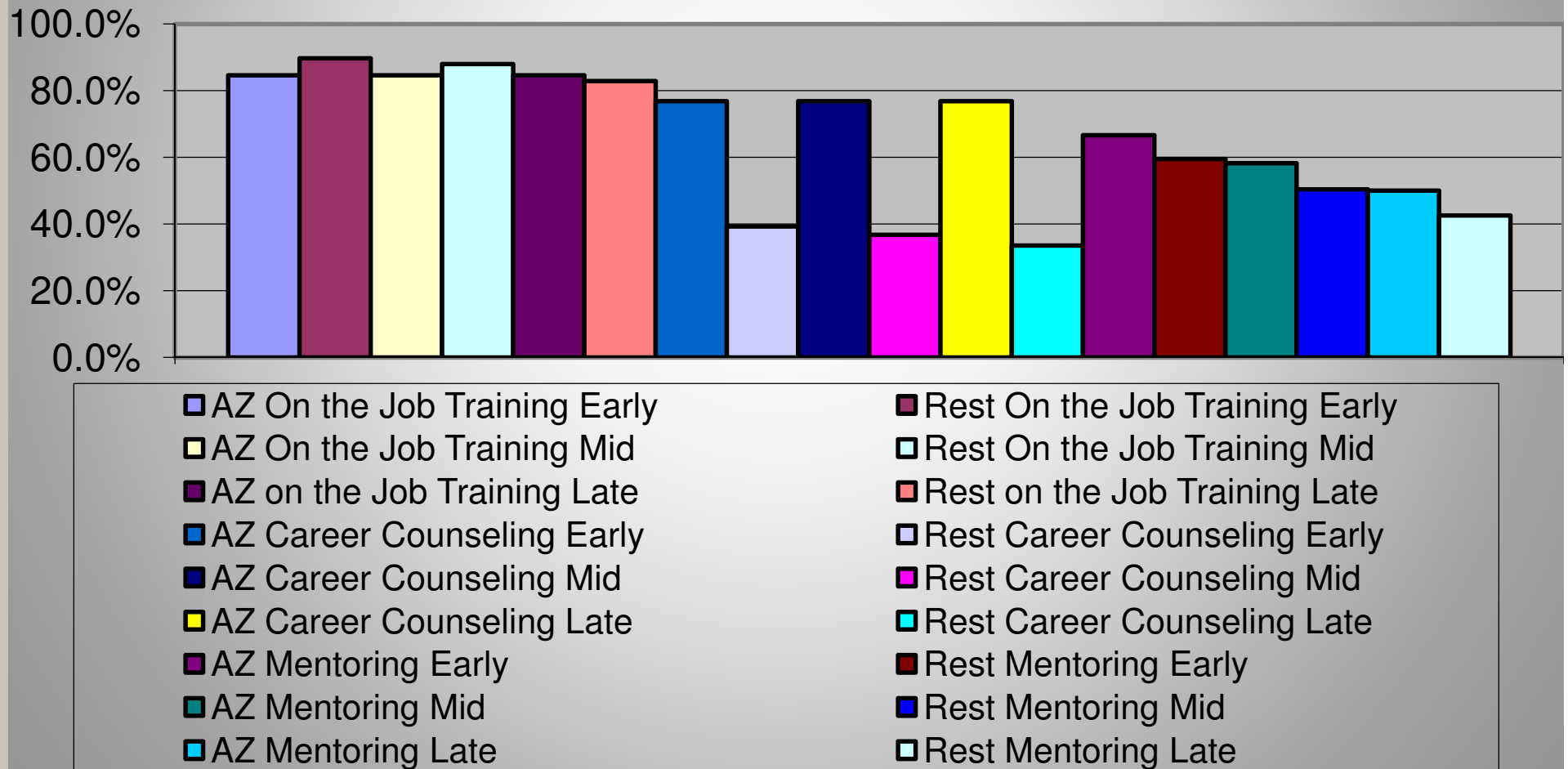


Action

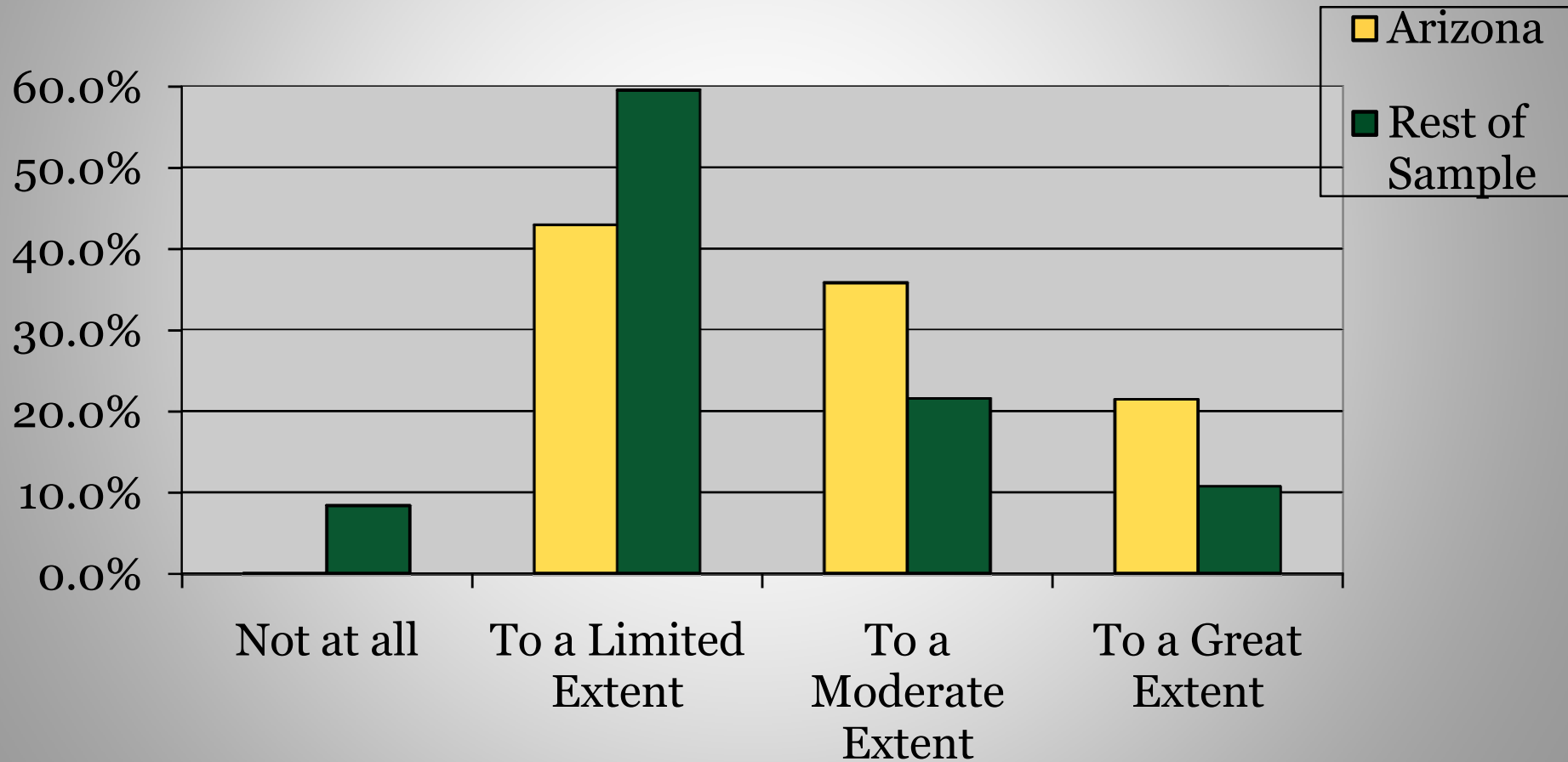
Percentage of Agencies that Recruit Workers of **Diverse** Ages



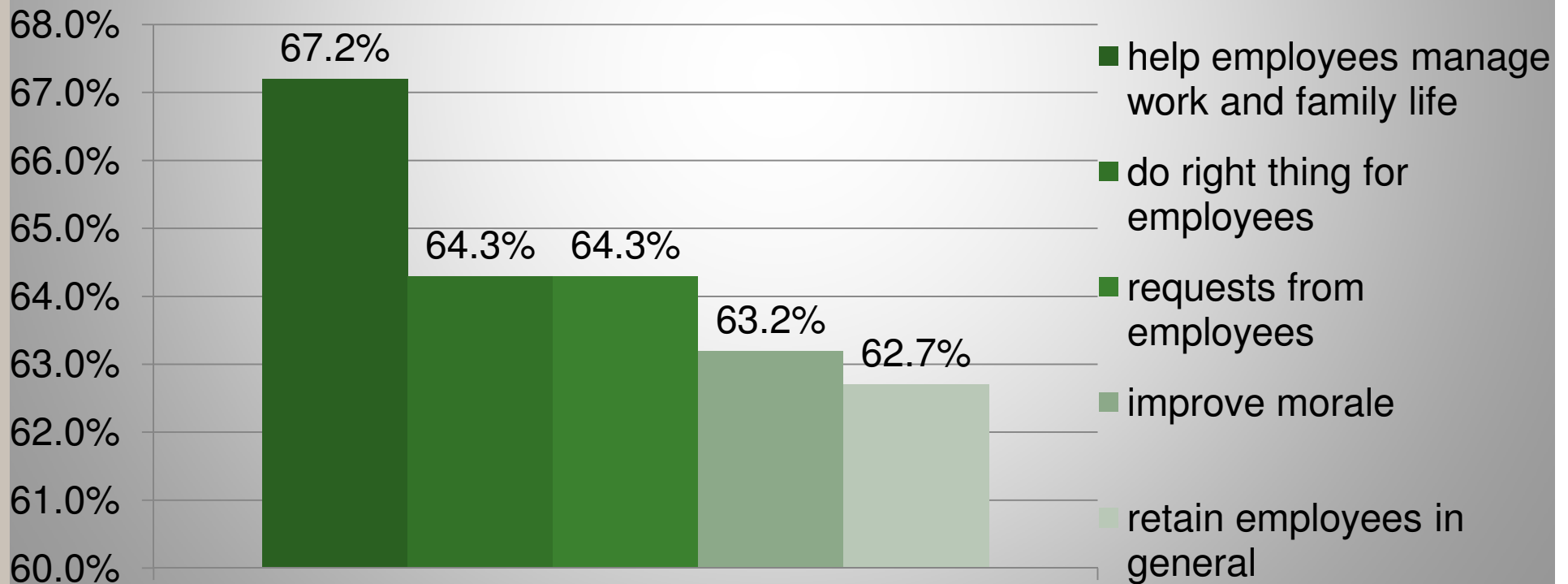
Availability of Career Development Opportunities by Career Stage



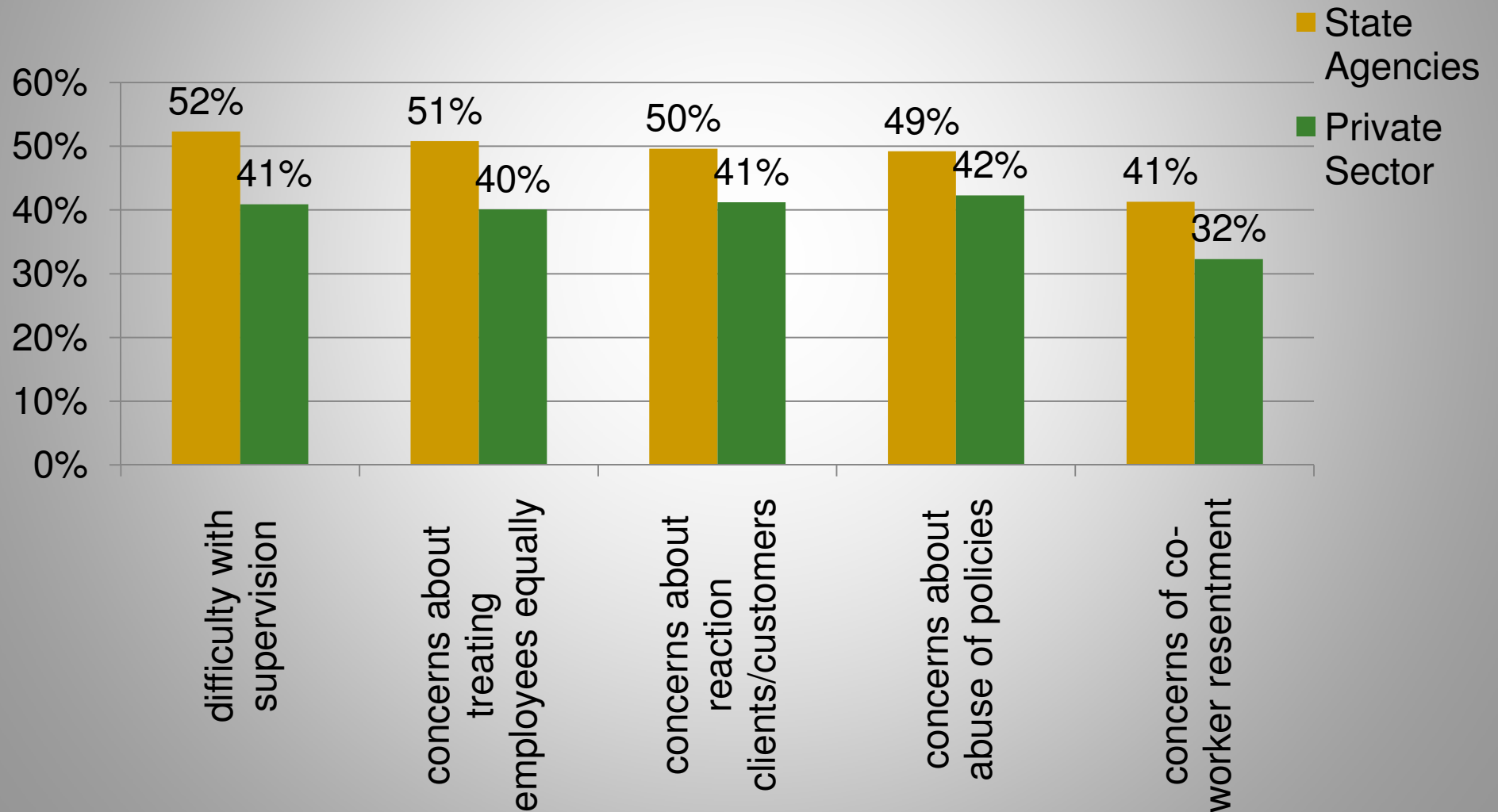
Linking Workplace Flexibility to Effectiveness



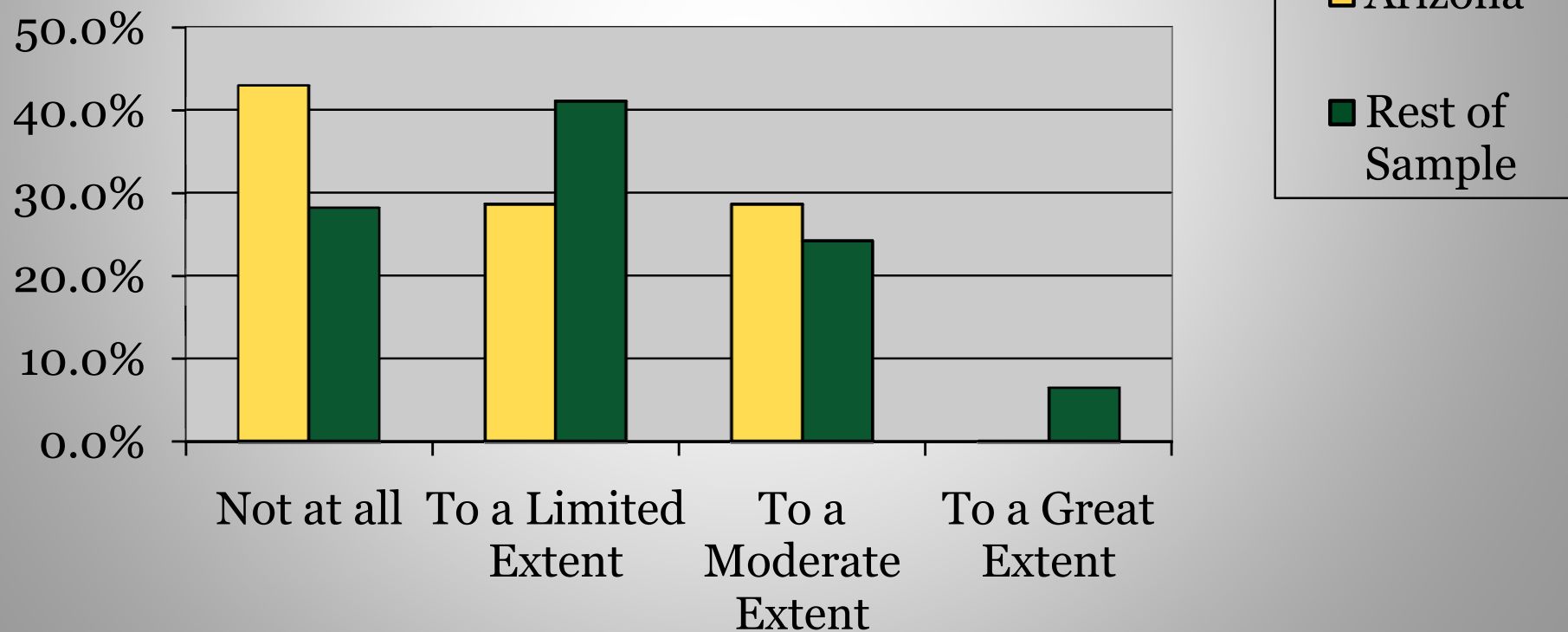
Top Motivators to Establishing Flexible Work Options



Top Barriers to Establishing Flexible Work Options

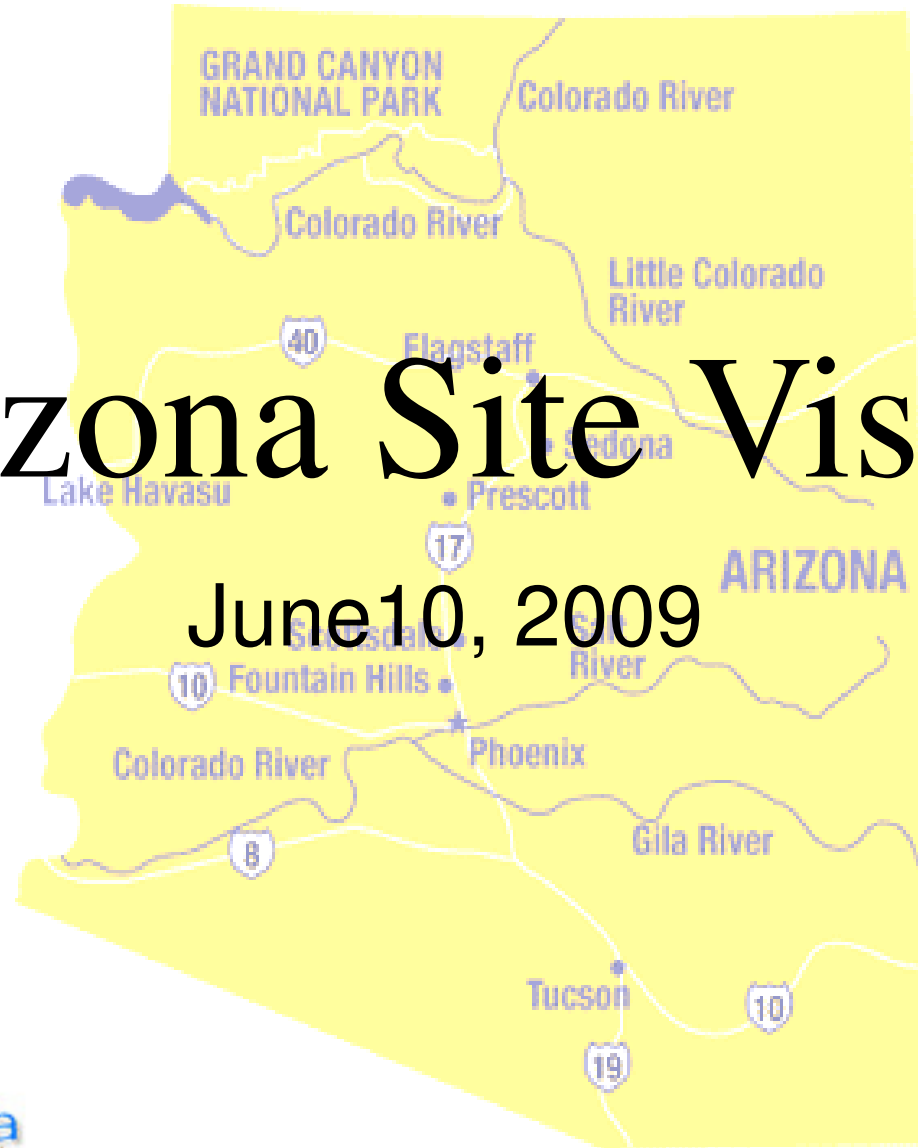


Strategies to Encourage Late Career Employees to Work Past Retirement



Arizona Site Visit

June 10, 2009



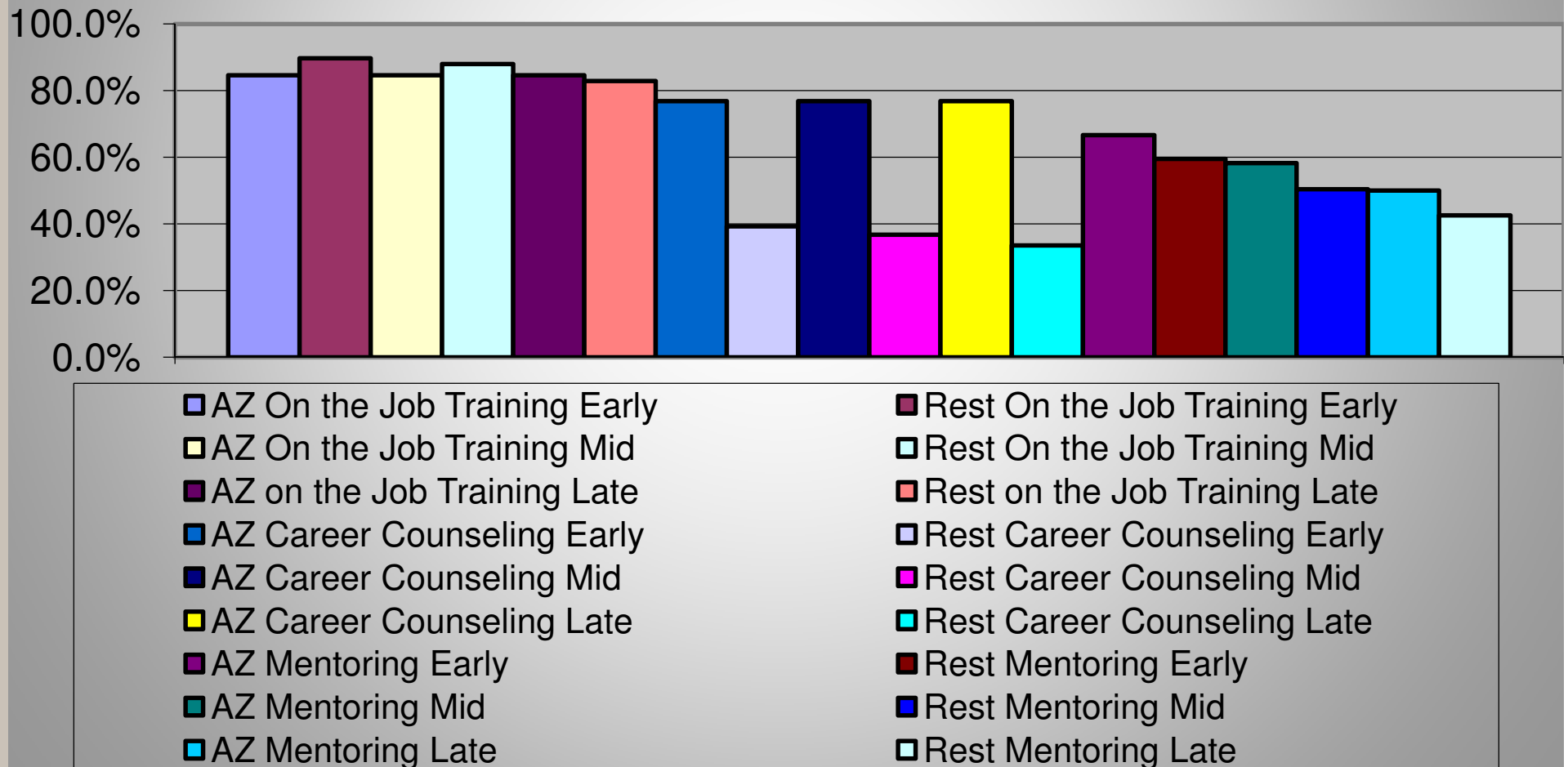
in partnership with

THE SLOAN CENTER ON

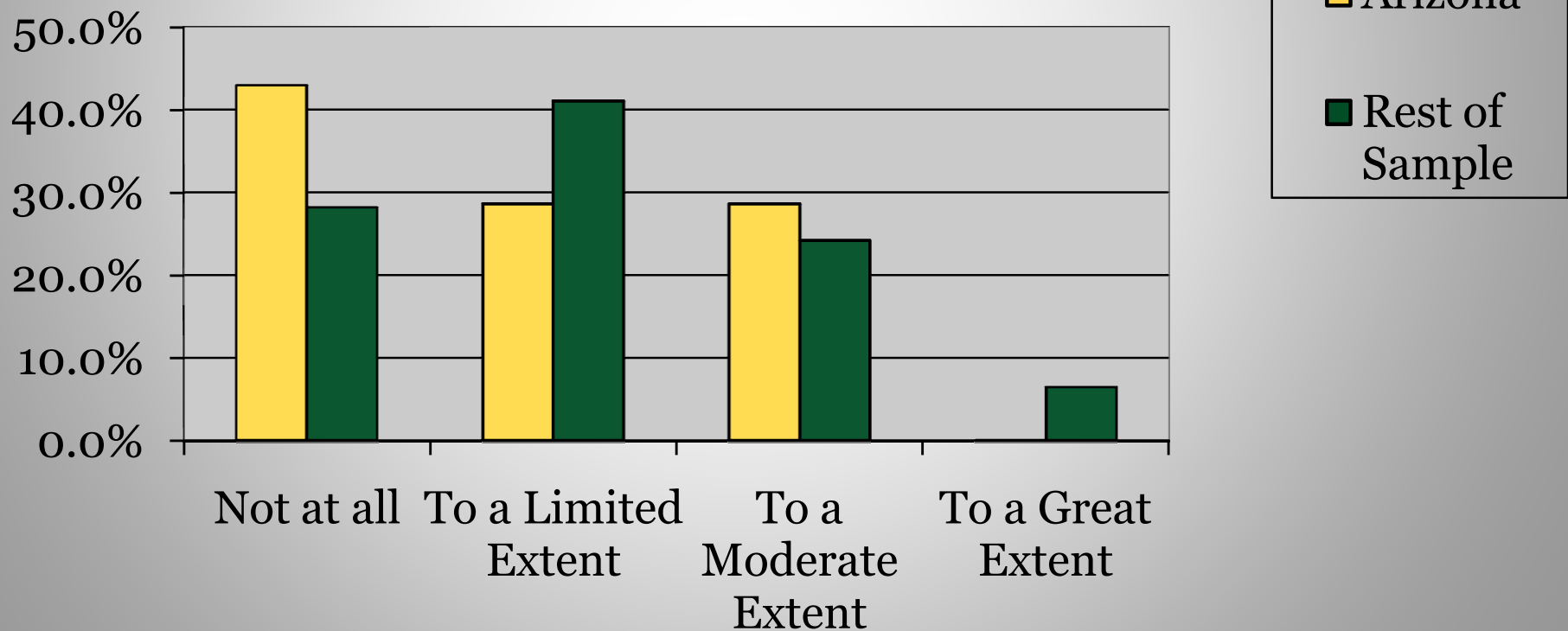
aging
& work

AT BOSTON COLLEGE

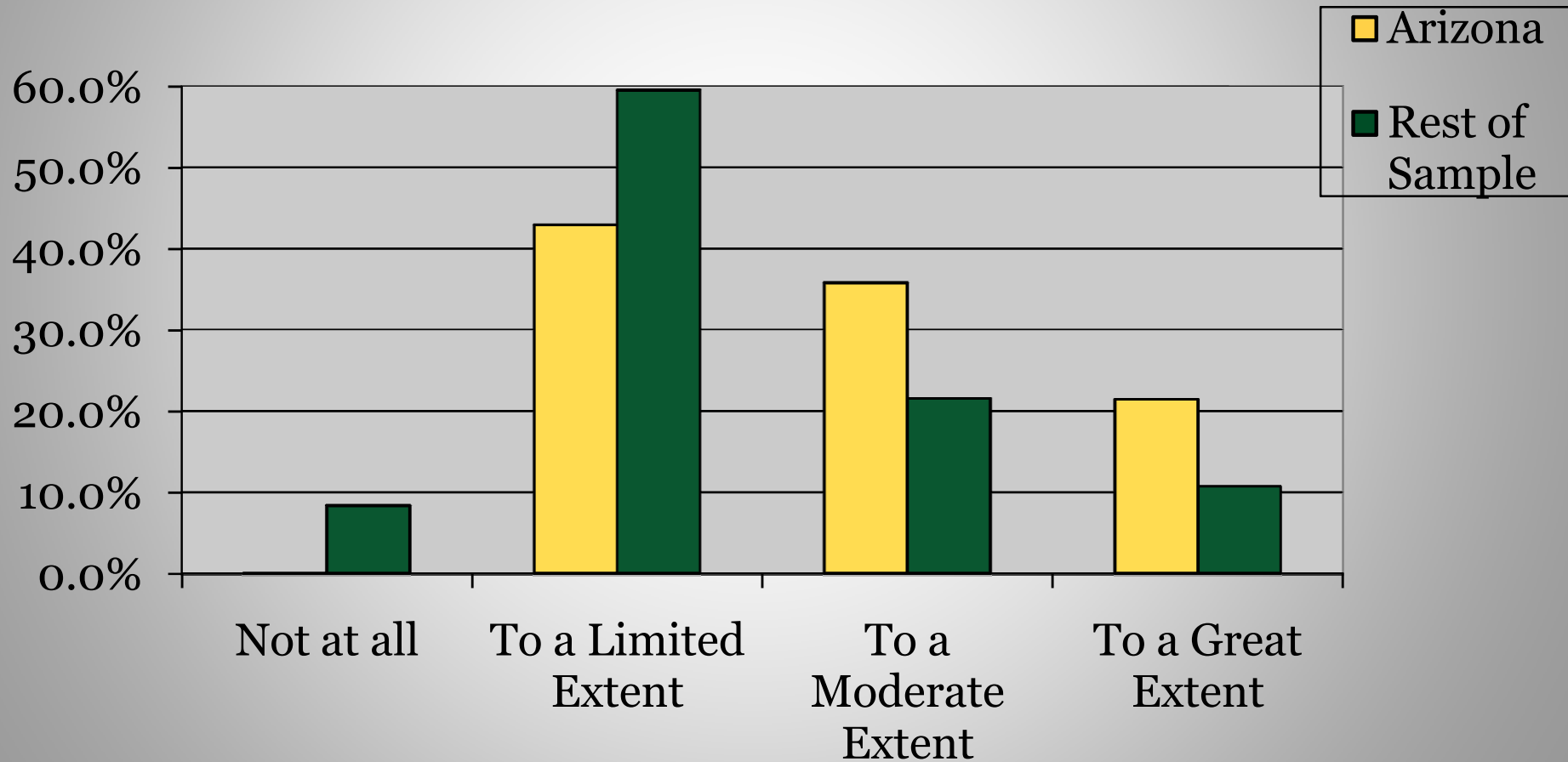
Availability of Career Development Opportunities by Career Stage



Strategies to Encourage Late Career Employees to Work Past Retirement



Linking Workplace Flexibility to Effectiveness



Characteristics of an Employer-of- Choice

- Trust
- Teamwork
- Employees First
- Renewal
- Dual Centric employees